

Belmont Public Library

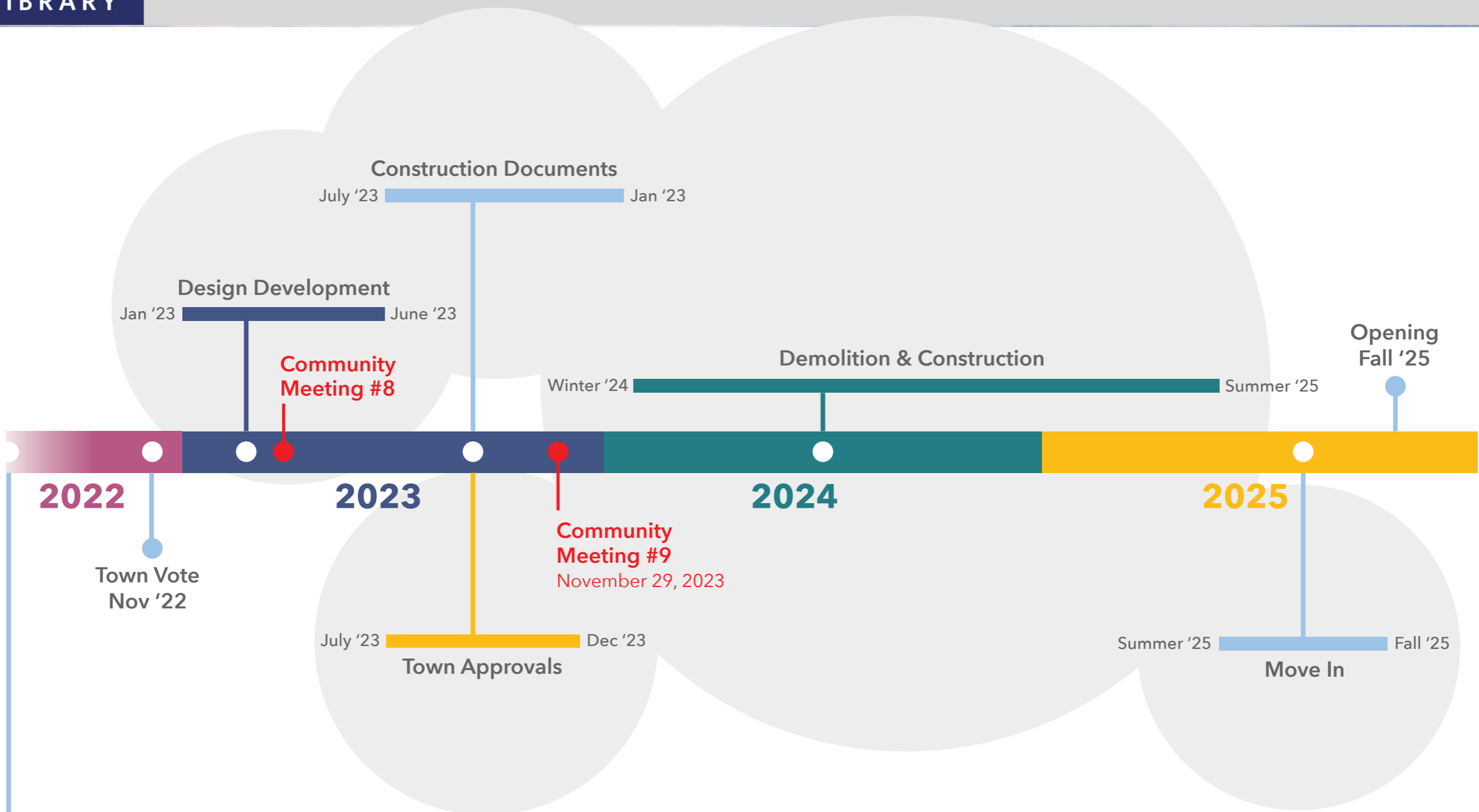
Community Update
November 29, 2023



Temporary Locations and Services



Temporary Locations and Services



Town Vote preceded by:

- Regular Town Meeting Updates on project progress
- 2019 Schematic Design (12 months, 4 community meetings, town department and stakeholder outreach)
- 2016 Library Feasibility Study (8 months, 3 community meetings, town department and stakeholder outreach)

Temporary Locations and Services

Great Partnerships: Town, School Administration/Committee, COA & Benton Boards

Beech Street Center – Primary Hub, Adults, Computers, Materials, Reference

9am - 7:30pm (Monday – Thursday)

9am - 5pm (Friday)

9am - 3pm (Saturday)

Benton Library Satellite - Children

9am - 12pm, 2pm - 5pm (Monday, Tuesday, & Friday)

10am - 1pm, 3pm - 7:30pm (Wednesday & Thursday)

9am - 3pm (Saturday)

Monthly Friends of Benton events will continue

Chenery - Library Staff Offices

9am - 5pm (Monday – Friday)

Working with School Partners – Young Adult Services

Temporary Locations and Services

High Level Timeline:

November

- **Nov 22nd – last day of service in the current building**
- **Transitional Services at both the Beech Street and Benton locations (11/27)**
 - 24/7 access to online resources and materials
 - Material returns
 - Holds pick up
 - Museum passes
 - Online and in person Help and Reference questions
 - Check the library calendar for programs

December

- **Move of materials to temporary locations**
- **Return to full services including computers and access to current materials end of the month)**
- **Check the library calendar for programs – both in person and via zoom**

Temporary Locations and Services

Where Do I Go For Information...

Library Website - Updated with latest information on library services

The New Library tab on the home page

Online Chat and Help

Hotline for Information 617- 993 – 2871

Attend the Community Update meeting to hear more details and see the latest design for the new building!

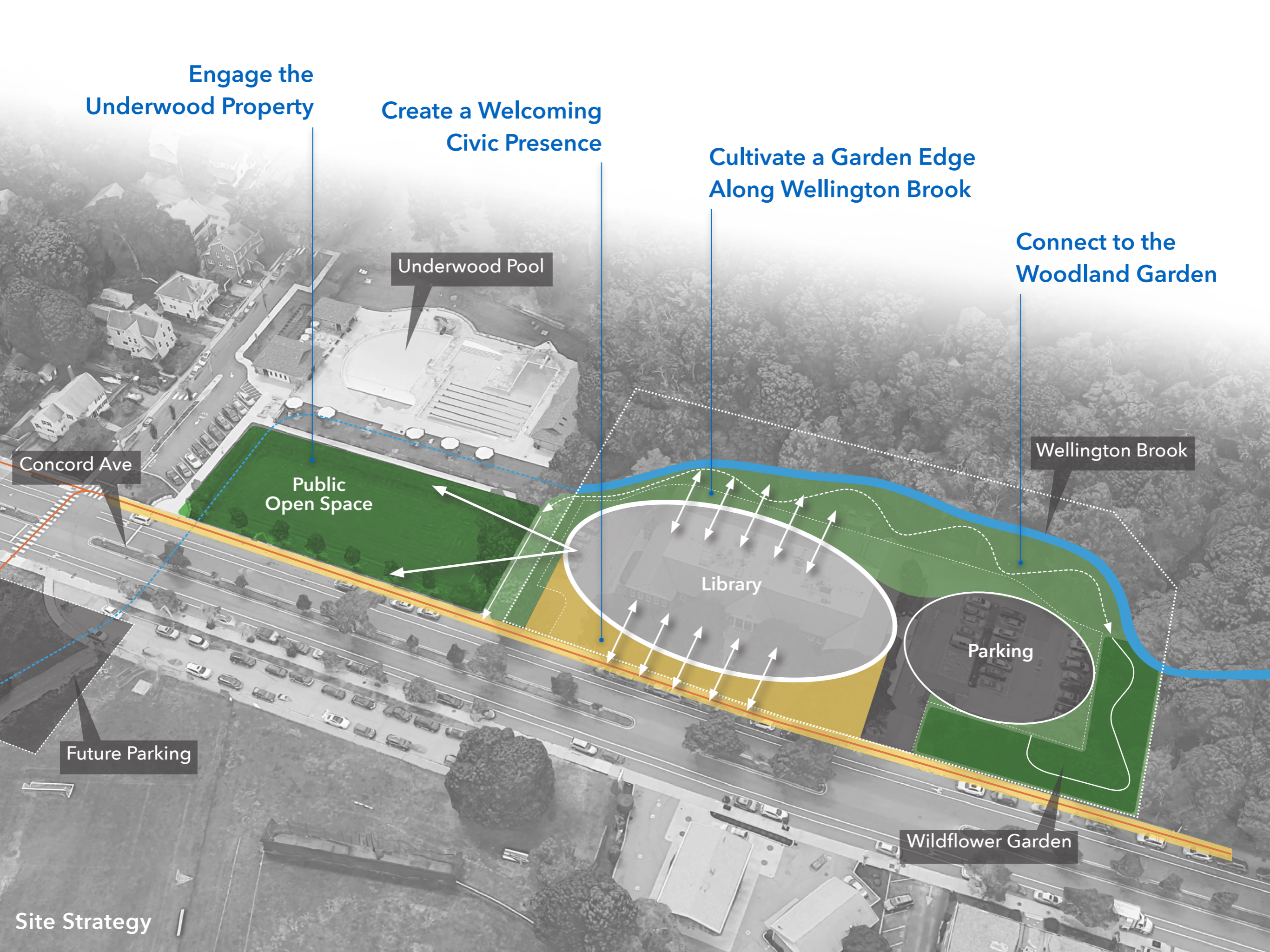
**November 29, 2023 7:00 p.m.
Select Board room or via Zoom**

Engage the Underwood Property

Create a Welcoming Civic Presence

Cultivate a Garden Edge Along Wellington Brook

Connect to the Woodland Garden



Underwood Pool

Concord Ave

Public Open Space

Library

Wellington Brook

Parking

Future Parking

Wildflower Garden

Site Strategy



Concord Avenue

Proposed Additional Street Parking

**PARKING
(42 Spaces)**

NEW LIBRARY

(6) EV parking spaces

Existing Woodland Garden

New Entry to Woodland Garden

New Entry to Wildflower Garden

Flag Pole

Entry / Civic Terrace

Veterans Memorial

Drop Off

Stormwater Swale Garden

Bike Shelter

Existing Underwood Lawn

Brook Overlook

Parking Lot Stormwater Garden

Boardwalk Overlook

Reading / Lunch Lawn

South Entry Terrace

Tupelo Grove

Wellington Brook Path

Brookside Amphitheater

Interactive Stormwater Garden

Terrace

Wellington Brook

Underwood Pool

Site Plan

Underwood
Lawn

Wellington
Brook

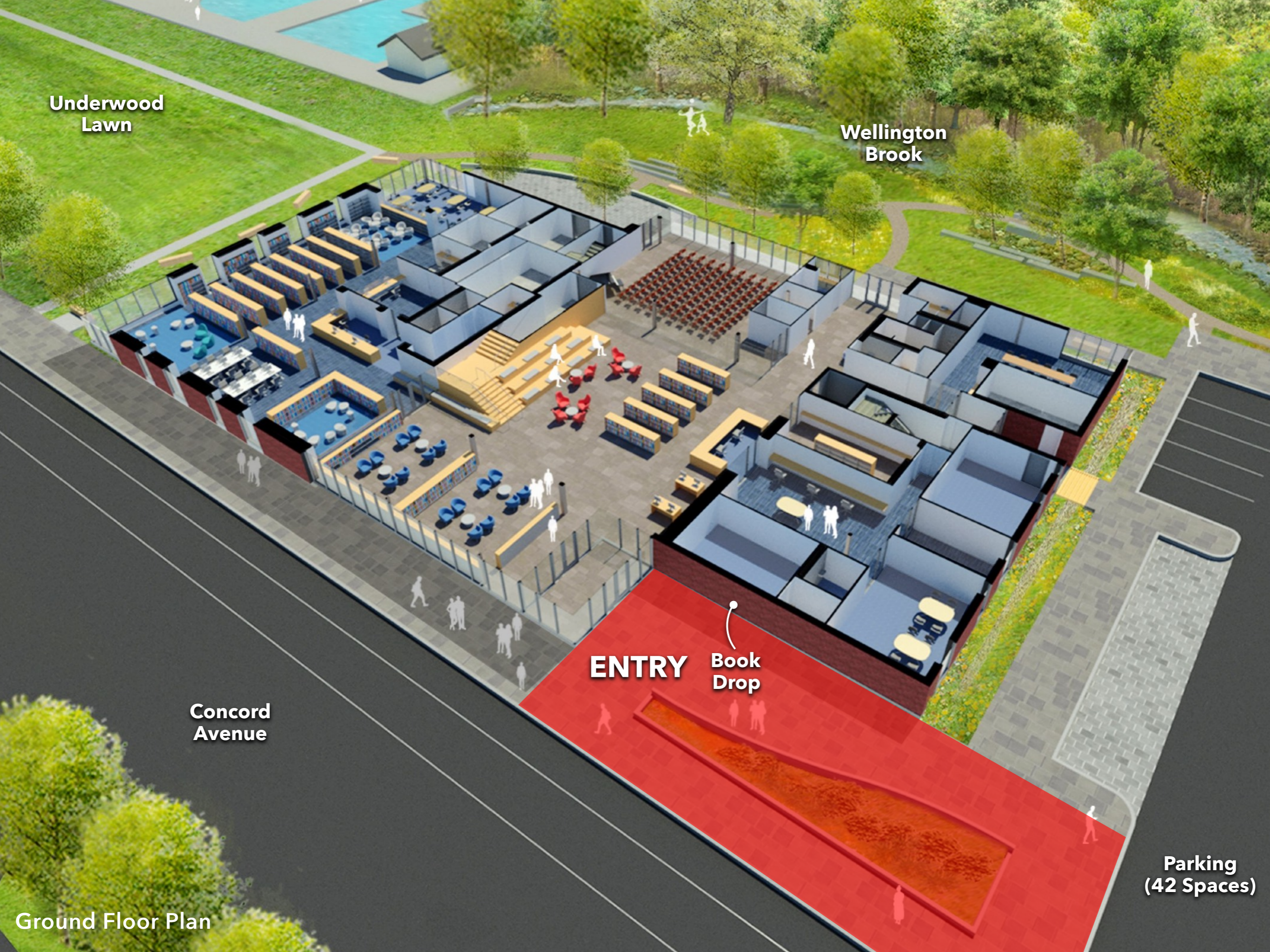
Concord
Avenue

ENTRY

Book
Drop

**Parking
(42 Spaces)**

Ground Floor Plan



Underwood
Lawn

Wellington
Brook

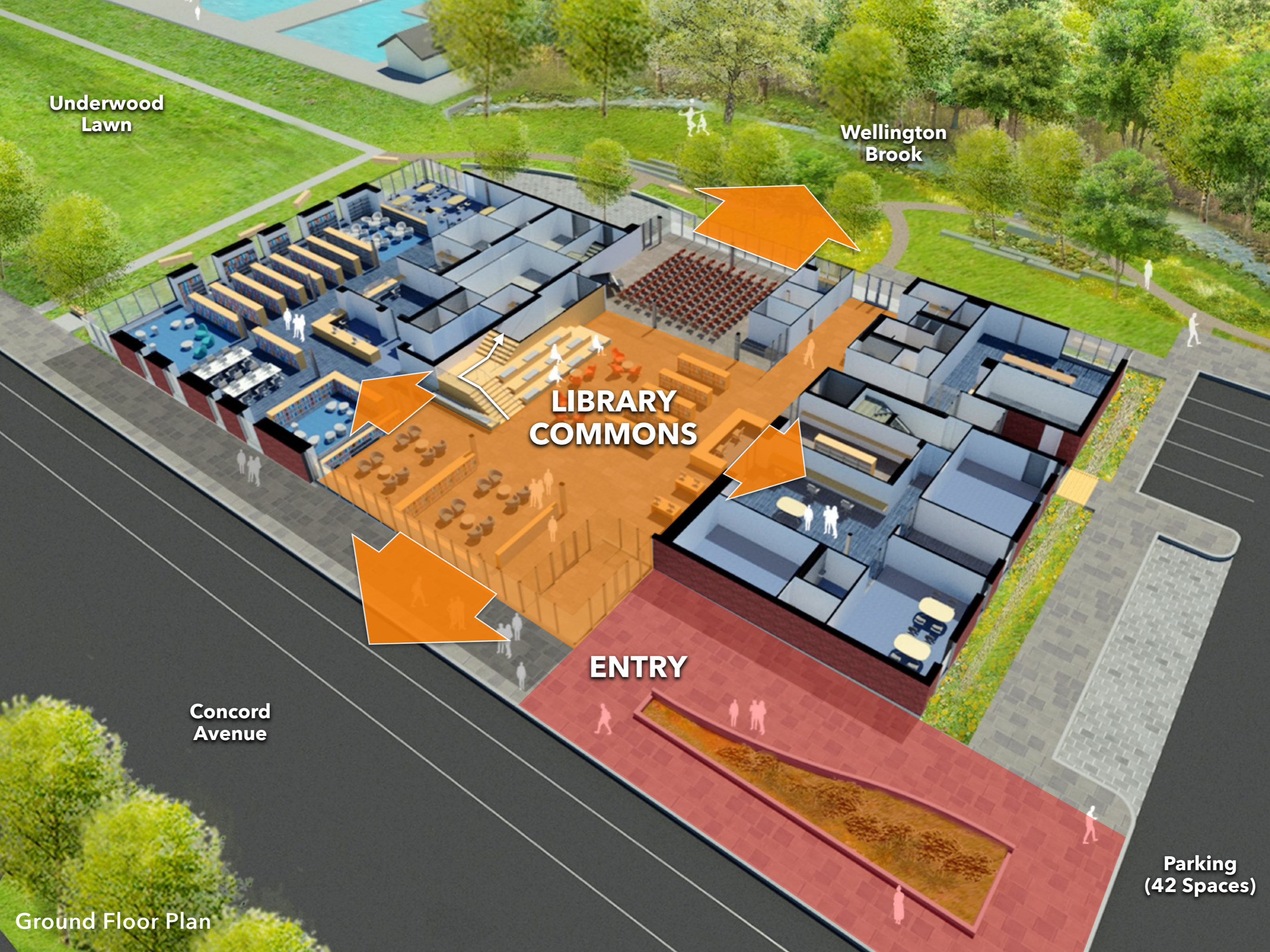
LIBRARY
COMMONS

ENTRY

Concord
Avenue

Parking
(42 Spaces)

Ground Floor Plan





Community Meeting Room

Vending

Mens

Womens

WC

Storage

Commons Stair

Flexible Seating

New Materials

Info Desk

LIBRARY COMMONS

Self Check-Out

Circulation Workroom

Commons Lounge

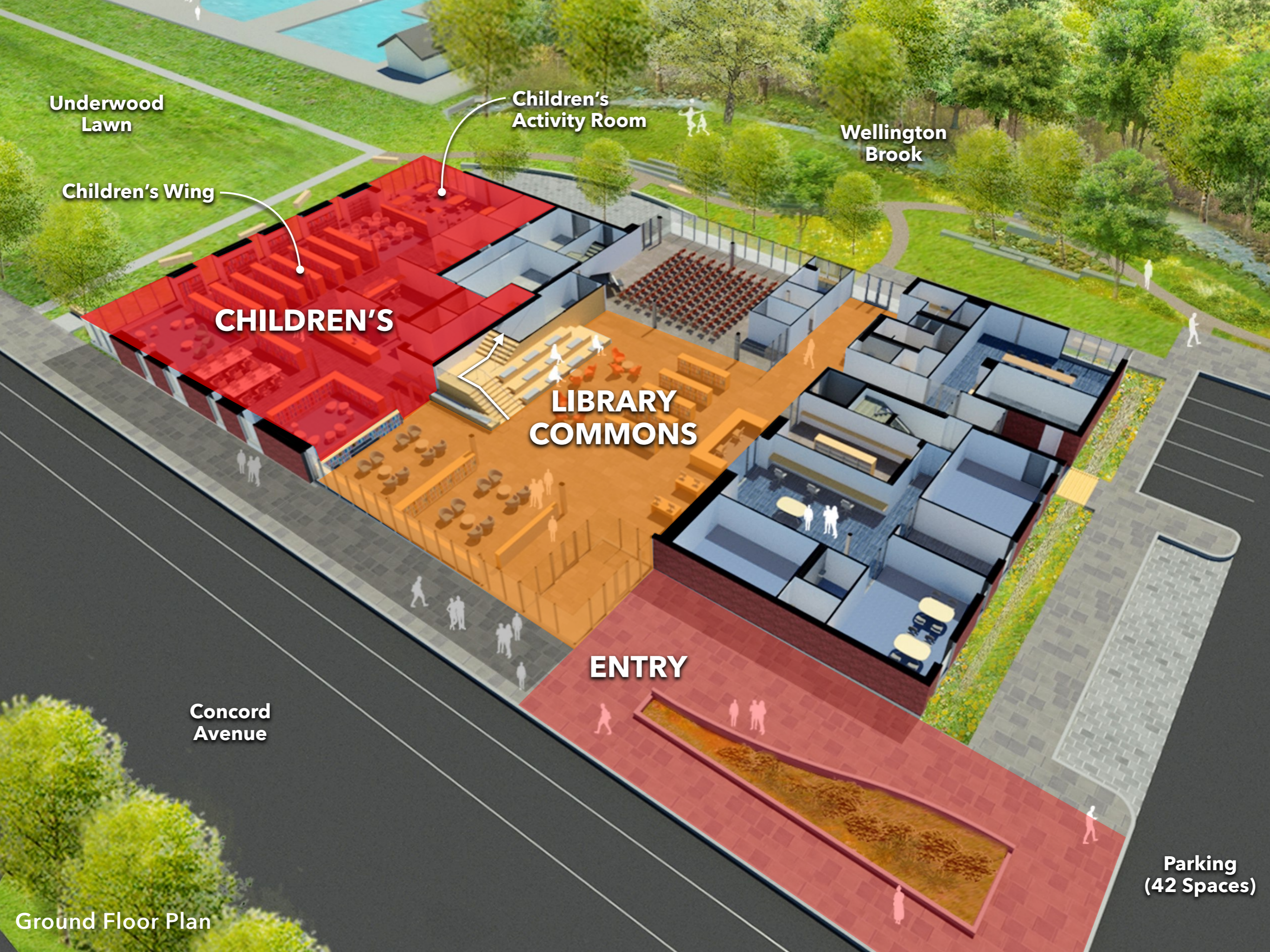
Entrance

Children's Wing

Ground Floor Plan



Library Commons



Underwood
Lawn

Children's
Activity Room

Wellington
Brook

Children's Wing

CHILDREN'S

**LIBRARY
COMMONS**

ENTRY

Concord
Avenue

Parking
(42 Spaces)

Ground Floor Plan



Children's Wing

Underwood
Lawn

CHILDREN'S

**LIBRARY
COMMONS**

MEETING

Community
Meeting Room

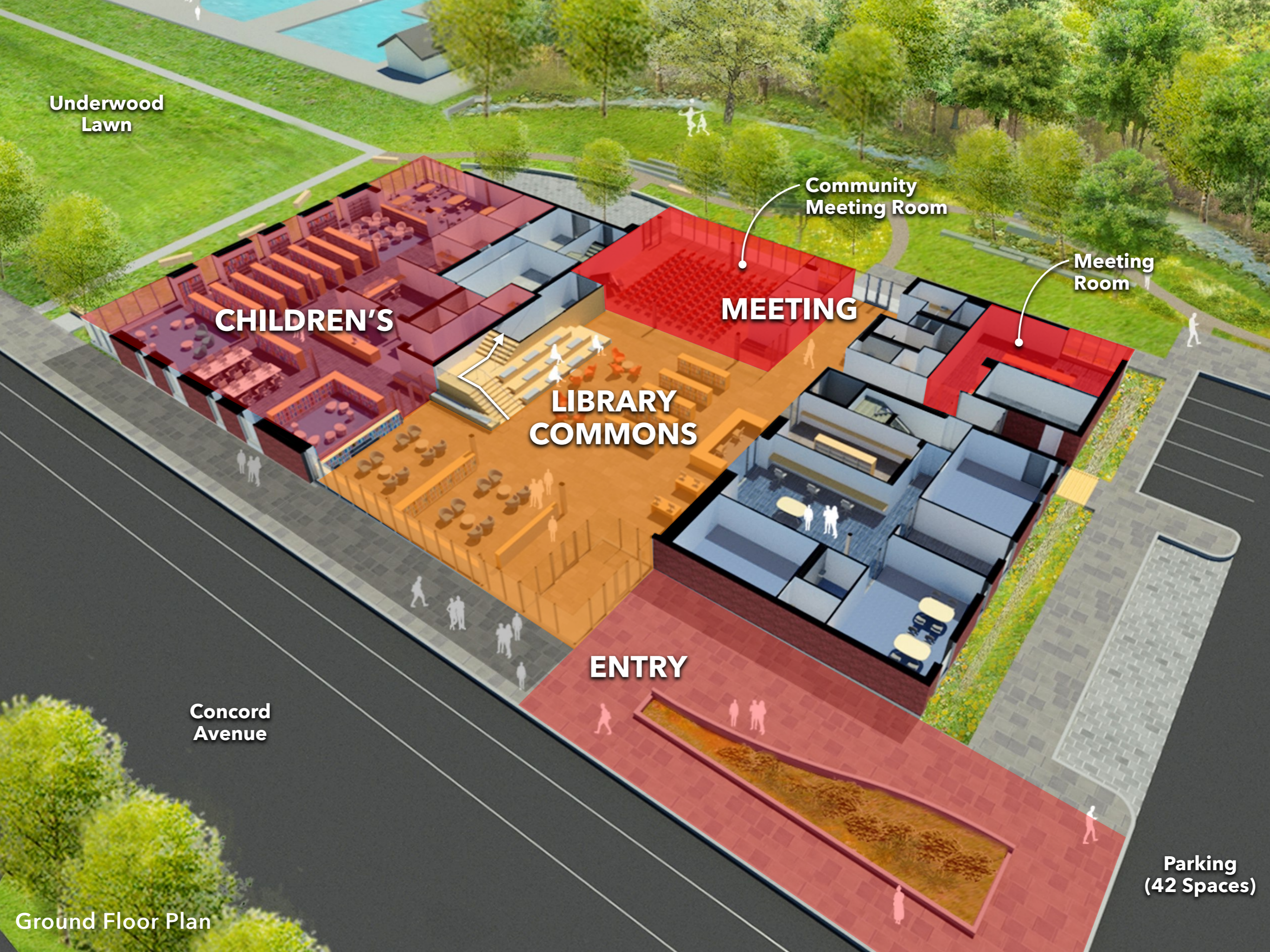
Meeting
Room

ENTRY

Concord
Avenue

Parking
(42 Spaces)

Ground Floor Plan



Underwood
Lawn

CHILDREN'S

**LIBRARY
COMMONS**

**AFTER HOURS
ACCESS**

Community
Meeting Room

Meeting
Room

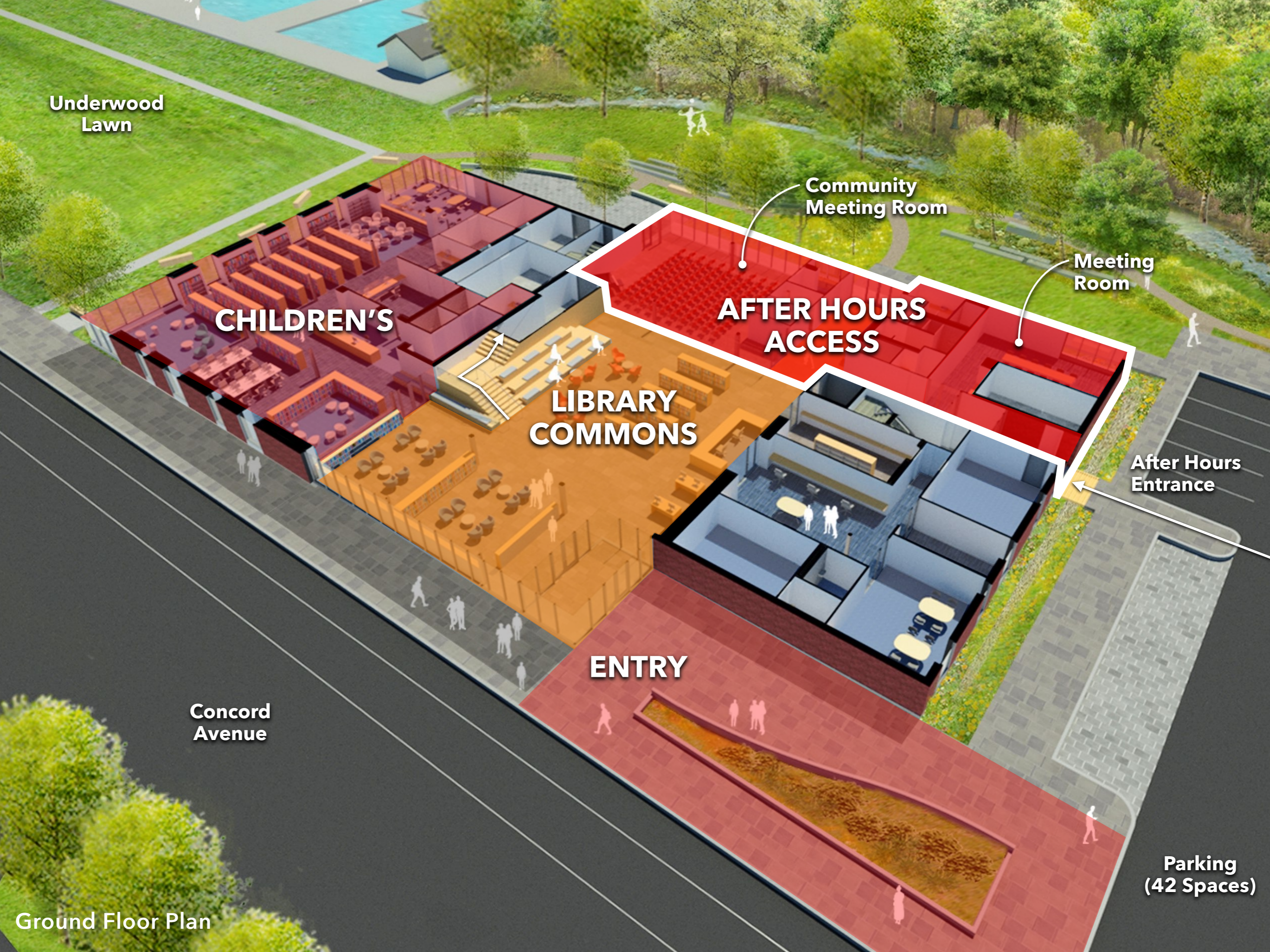
After Hours
Entrance

ENTRY

Concord
Avenue

Parking
(42 Spaces)

Ground Floor Plan





Community Room

Underwood
Lawn

CHILDREN'S

**LIBRARY
COMMONS**

MEETING

Community
Meeting Room

Meeting
Room

**STAFF &
SUPPORT**

Staff and
Deliveries
Entrance

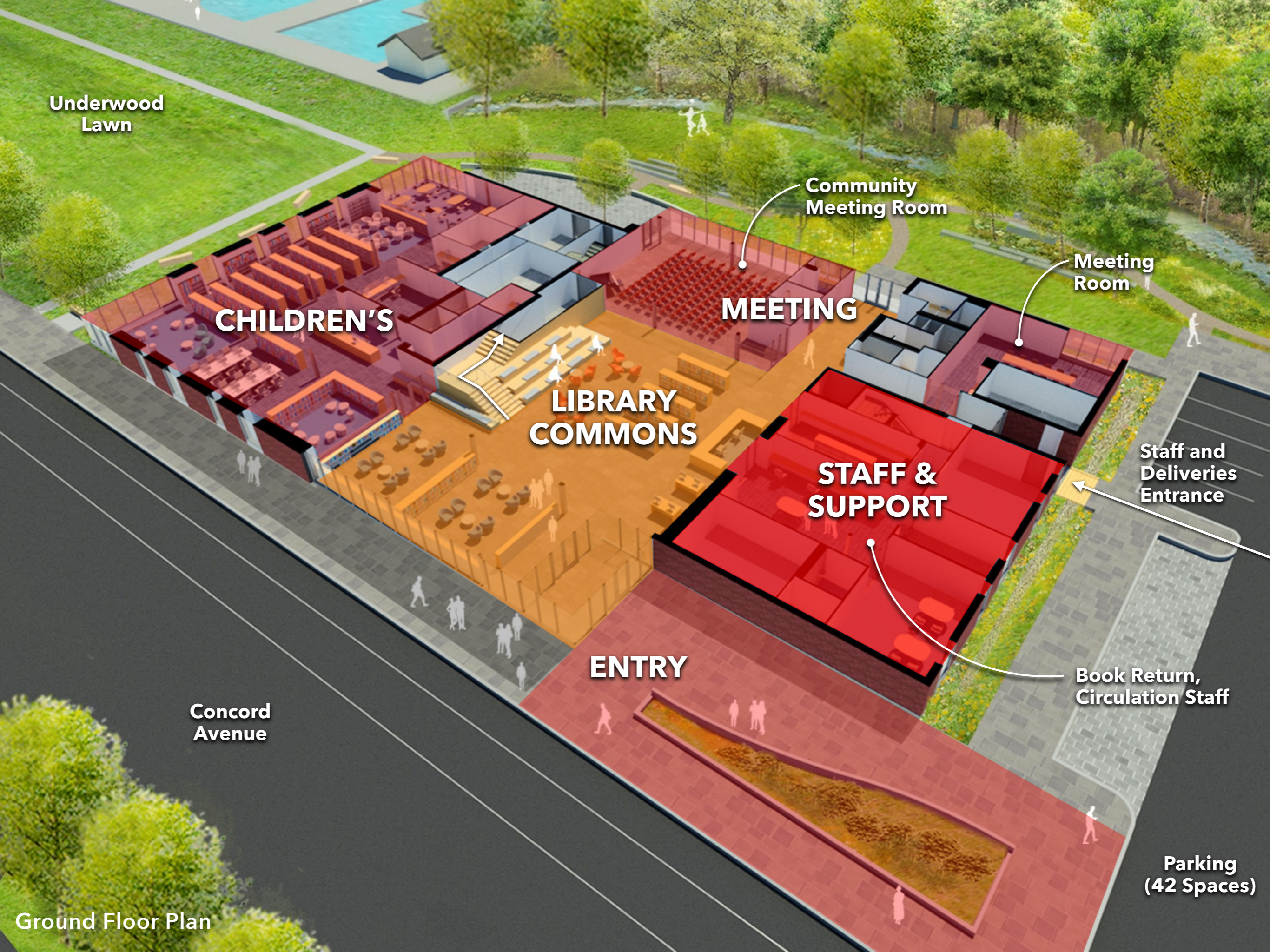
ENTRY

Book Return,
Circulation Staff

Concord
Avenue

Parking
(42 Spaces)

Ground Floor Plan





Periodicals

Outdoor Reading Porch

ADULT

Reference Desk

Library Commons

Concord Avenue

Second Floor Plan



Second Floor Overlooking Library Commons



Periodicals and Outdoor Reading Porch



**QUIET
READING**

ADULT

**Library
Commons**

**Concord
Avenue**

Second Floor Plan



**QUIET
READING**

**STUDY
ROOMS**

ADULT

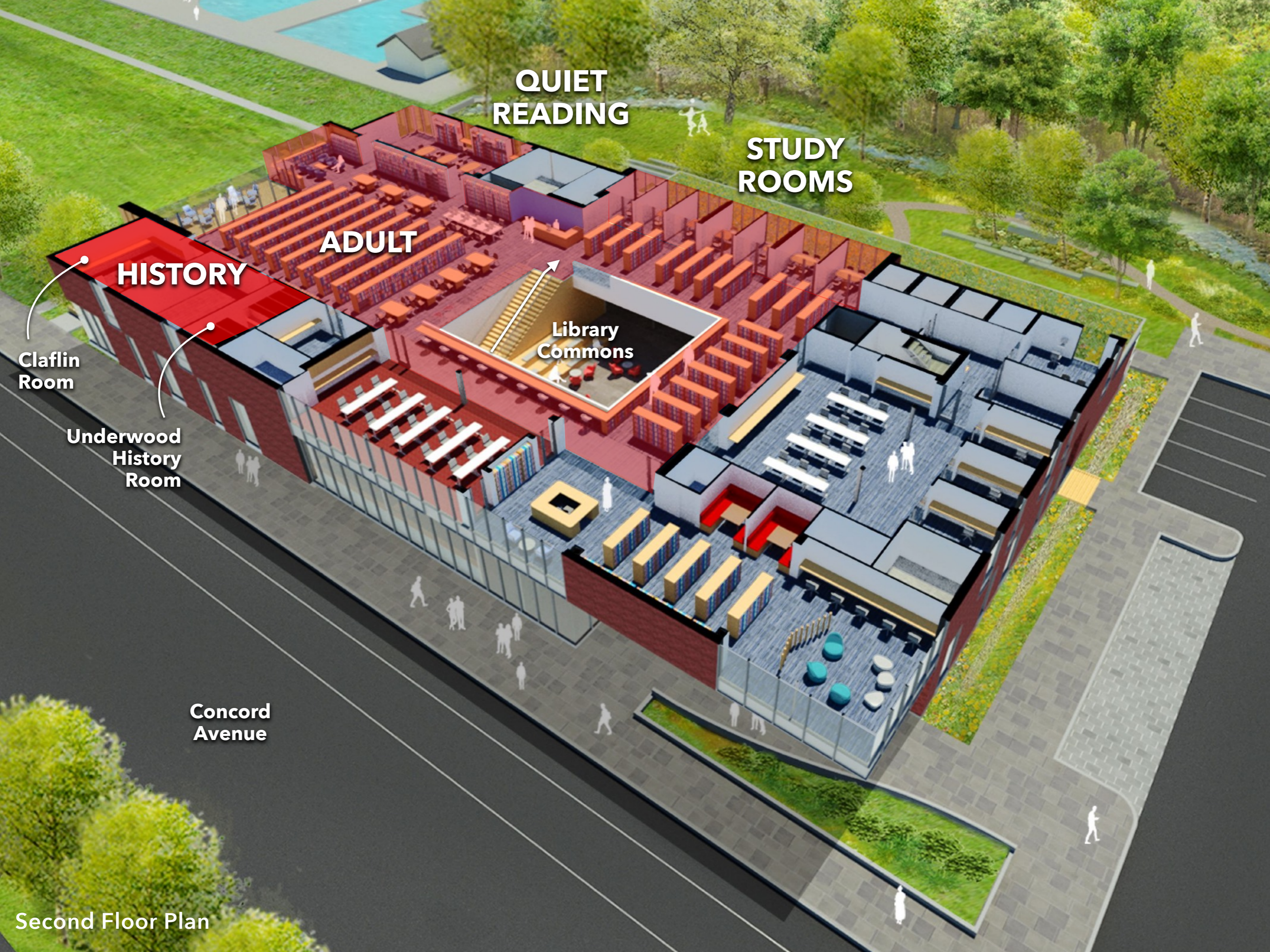
**Library
Commons**

**Concord
Avenue**

Second Floor Plan



Study Rooms



**QUIET
READING**

**STUDY
ROOMS**

ADULT

HISTORY

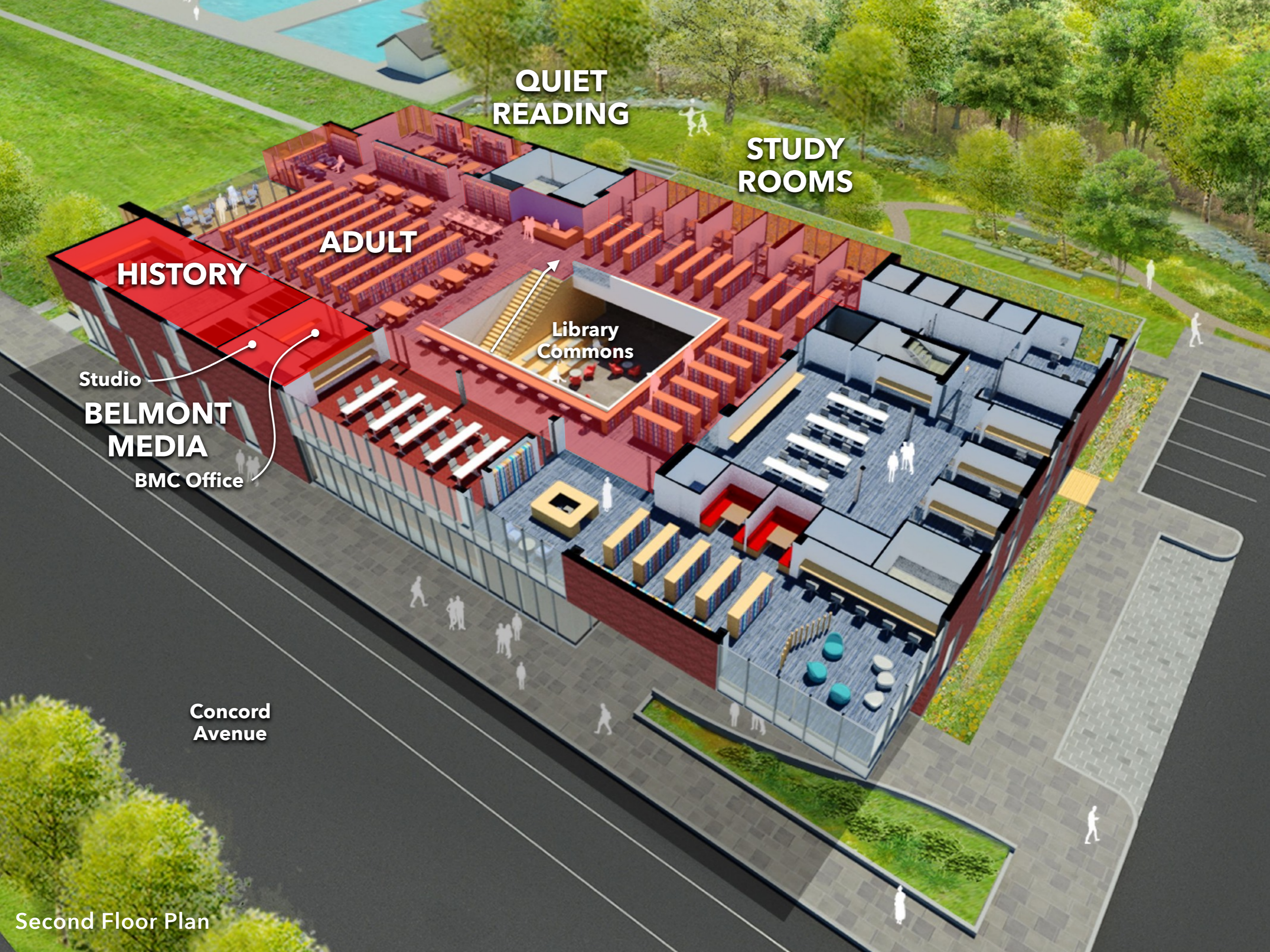
**Library
Commons**

**Clafin
Room**

**Underwood
History
Room**

**Concord
Avenue**

Second Floor Plan



**QUIET
READING**

**STUDY
ROOMS**

ADULT

HISTORY

Library
Commons

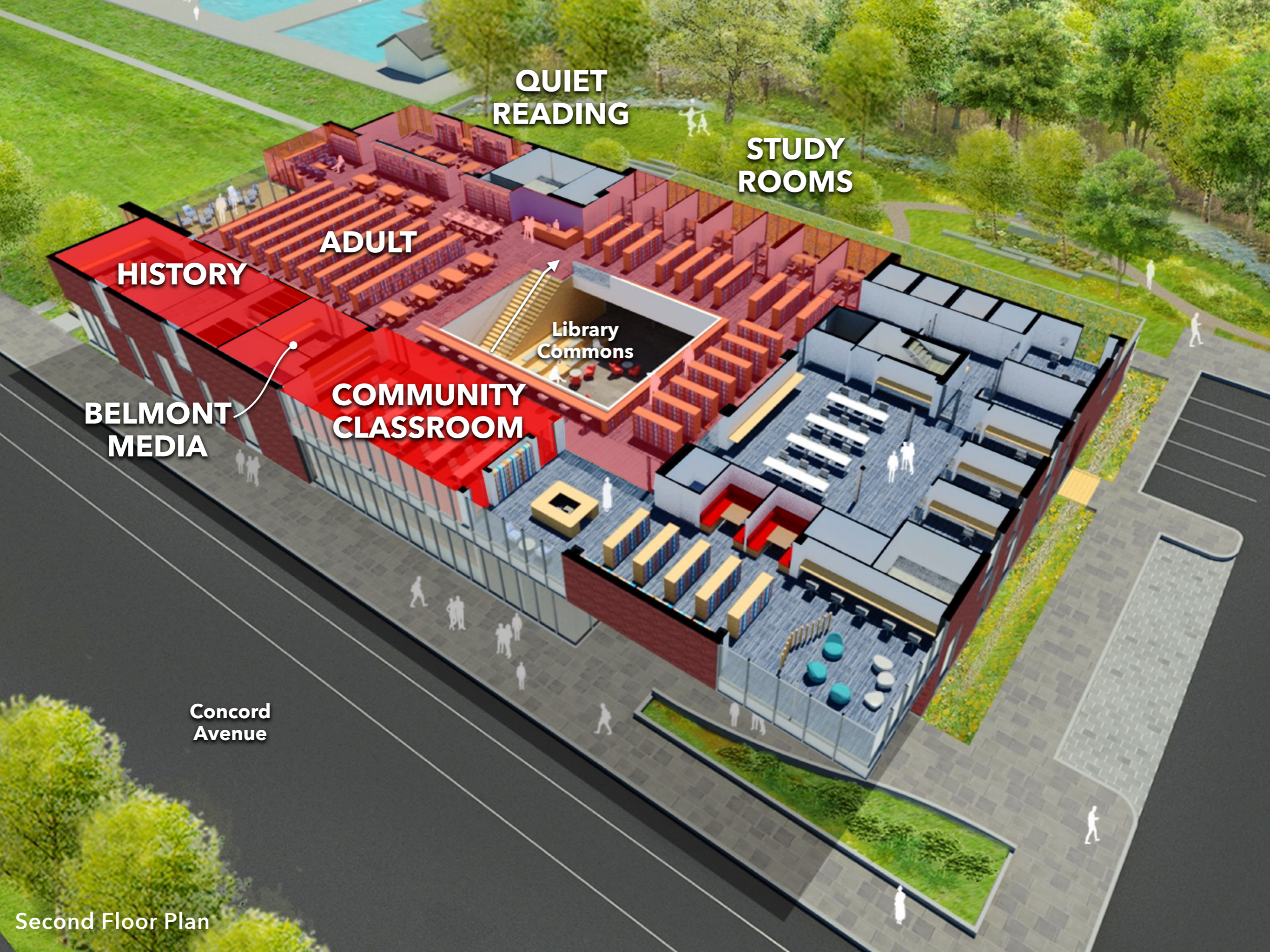
Studio

**BELMONT
MEDIA**

BMC Office

**Concord
Avenue**

Second Floor Plan



**QUIET
READING**

**STUDY
ROOMS**

ADULT

HISTORY

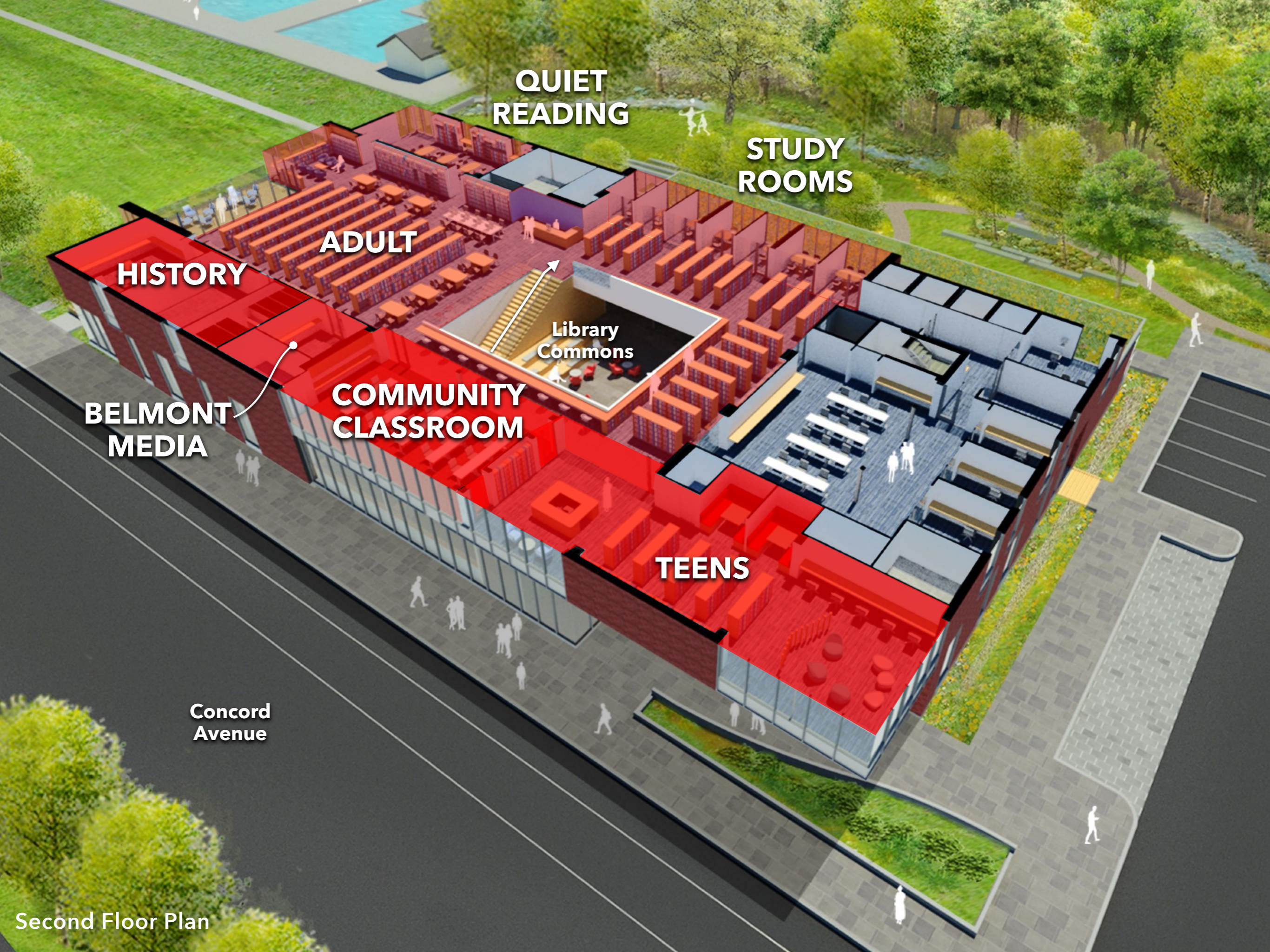
Library
Commons

**COMMUNITY
CLASSROOM**

**BELMONT
MEDIA**

**Concord
Avenue**

Second Floor Plan



**QUIET
READING**

**STUDY
ROOMS**

ADULT

HISTORY

**Library
Commons**

**BELMONT
MEDIA**

**COMMUNITY
CLASSROOM**

TEENS

**Concord
Avenue**

Second Floor Plan



Teens Wing



**QUIET
READING**

**STUDY
ROOMS**

ADULT

HISTORY

Library
Commons

**STAFF &
SUPPORT**

**BELMONT
MEDIA**

**COMMUNITY
CLASSROOM**

TEENS

Staff Workroom
& Offices

Concord
Avenue

Second Floor Plan



STORAGE

MECH

Concord Avenue

Penthouse Plan



PV ARRAY

Concord Avenue

Roof Plan



View Across Concord Avenue



Aerial View Looking Southeast



View Across Underwood Lawn

ENERGY EFFICIENT BUILDING SYSTEMS

An all-electric VRF mechanical system contributes to a Zero Net Energy-ready building by eliminating fossil fuel use and reducing energy consumption through its high efficiency operation



NATURAL DAYLIGHTING

Natural light is invited deep into the library interior to illuminate reading spaces and reduce electric lighting loads



SOUTH FACING SOLAR PANELS

Roof-mounted photovoltaic (PV) panels contribute directly to the library's energy needs and reduce the building's overall ecological footprint



NATIVE PLANT SPECIES

Native species are restored along the banks of Wellington Brook to maintain the longevity of the brook landscape and provide an inviting teaching tool

HIGH PERFORMANCE BUILDING ENVELOPE

The library's walls, roof and windows are highly insulated to limit energy transfer and maximize the efficiency of heating and cooling systems



HEALTHY MATERIALS

Interior finishes and furniture use sustainable materials to ensure the long term health and wellbeing of the library occupants and library collection

STORMWATER MANAGEMENT

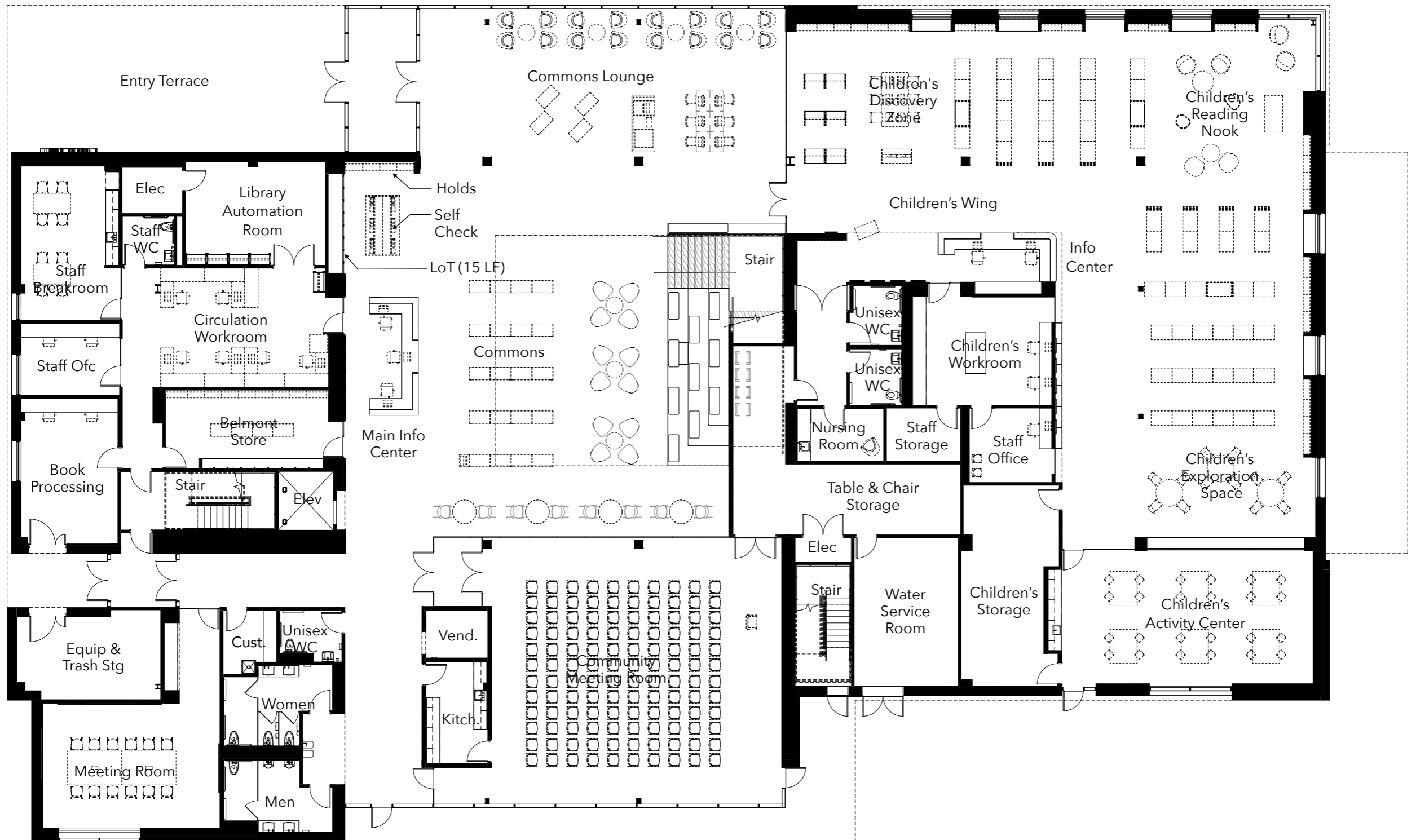
Vegetated swales and rain gardens capture and filter rainwater while runoff is reduced using permeable paving in place of conventional asphalt



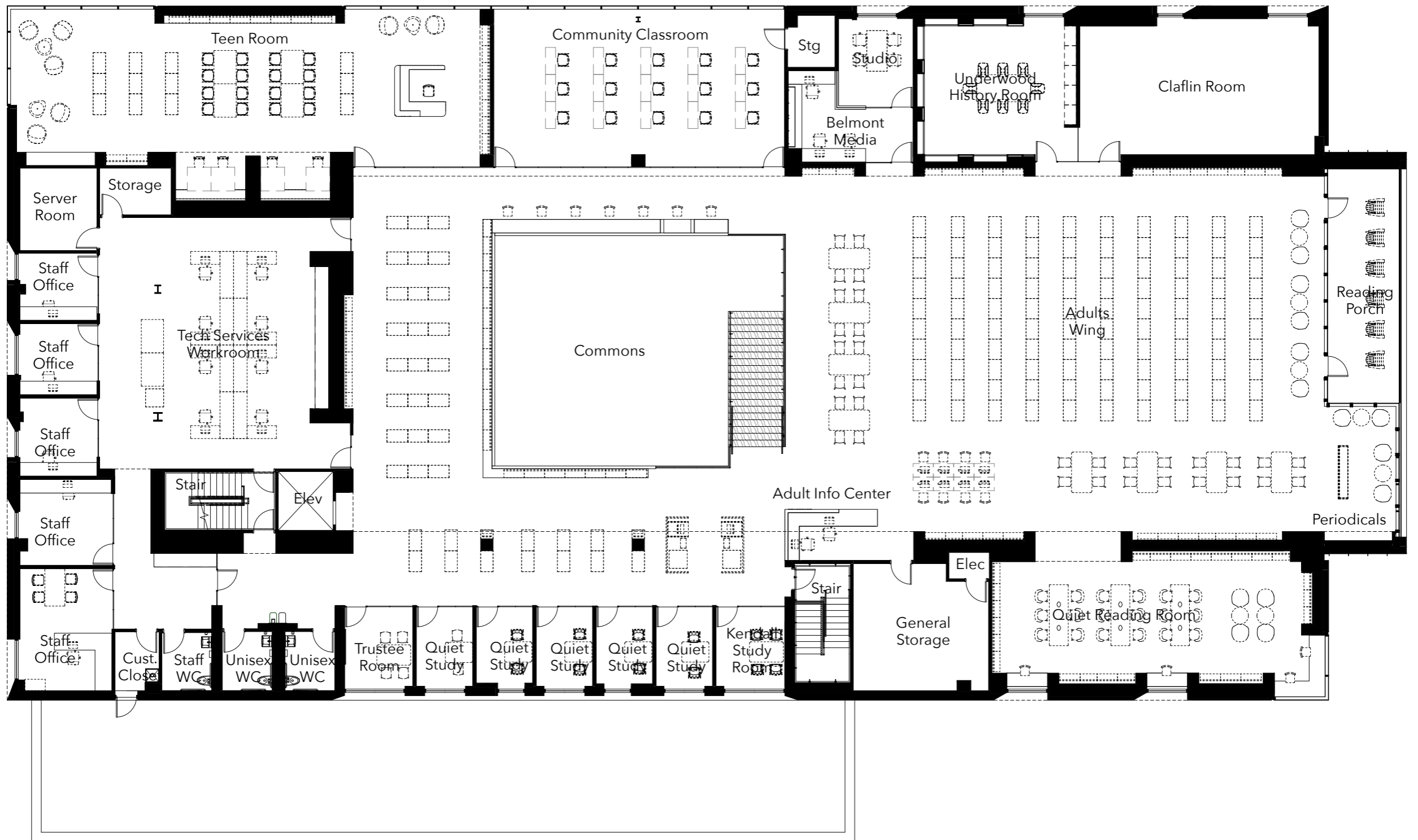
ACTIVE LANDSCAPE

Outdoor walking paths and intimate reading spaces create an active landscape along Wellington Brook linking the library, Woodland Garden and Underwood Pool & Playground

Wellington Brook



Ground Floor Plan



Second Floor Plan



BELMONT

PUBLIC

LIBRARY