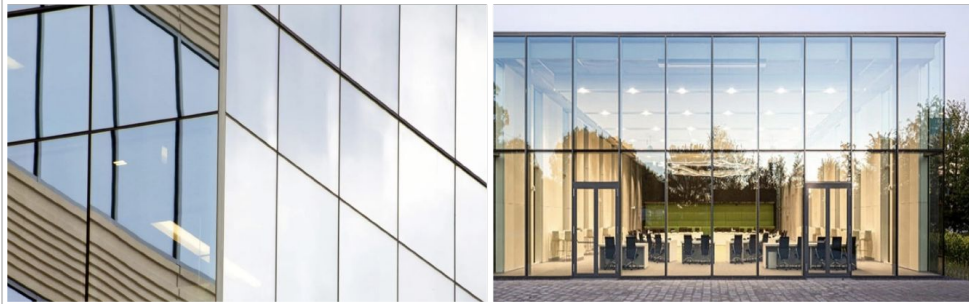
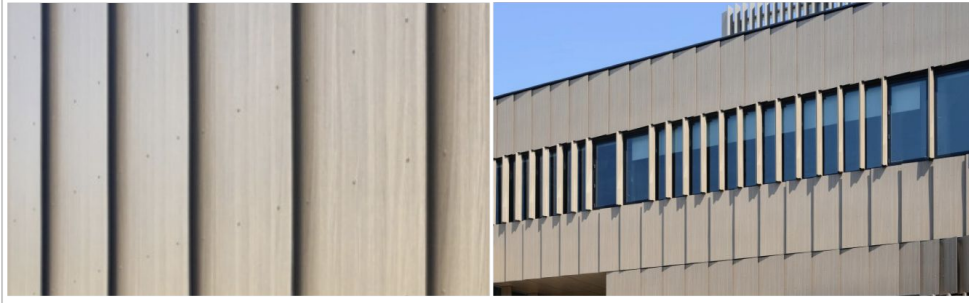
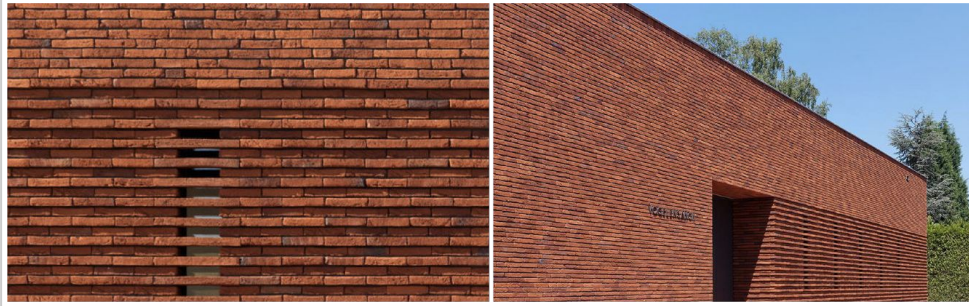


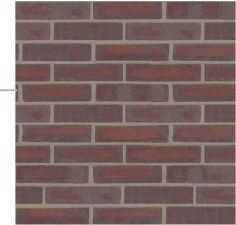
Belmont Public Library

EXTERIOR AND INTERIOR MATERIALS

09.12.2023



Exterior Materials



Brick

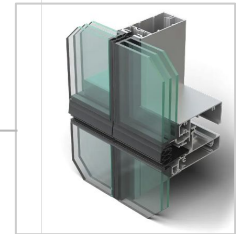
*Sioux City Brick,
Cabernet Burgundy
w/ flamed finish*

*Norman Size in
Running & Stack Bond*



HPL Panel

*Fundermax
Enigma "Nature"*



Glazing

*Curtainwall:
Kawneer 2500 UT*

*Punched Windows:
Kawneer 1620 UT*

*Glass:
Triple Glazed
Solarban 60*



View across Concord Avenue

Exterior Materials



Brick

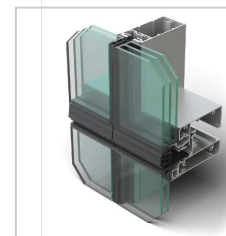
*Sioux City Brick,
Cabernet Burgundy
w/ flamed finish*

*Norman Size in
Running & Stack Bond*



HPL Panel

*Fundermax
Enigma "Nature"*



Glazing

*Curtainwall:
Kawneer 2500 UT*

*Punched Windows:
Kawneer 1620 UT*

*Glass:
Triple Glazed
Solarban 60*



View of entrance on Concord Avenue

Exterior Materials



Brick

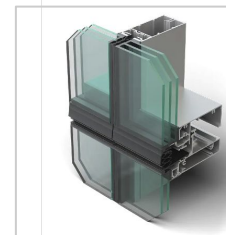
*Sioux City Brick,
Cabernet Burgundy
w/ flamed finish*

*Norman Size in
Running & Stack Bond*



HPL Panel

*Fundermax
Enigma "Nature"*



Glazing

*Curtainwall:
Kawneer 2500 UT*

*Punched Windows:
Kawneer 1620 UT*

*Glass:
Triple Glazed
Solarban 60*



View from Underwood Lawn

Exterior Materials



Brick

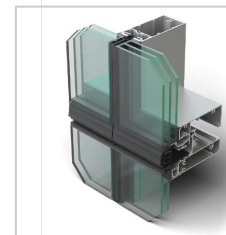
*Sioux City Brick,
Cabernet Burgundy
w/ flamed finish*

*Norman Size in
Running & Stack Bond*



HPL Panel

*Fundermax
Enigma "Nature"*



Glazing

*Curtainwall:
Kawneer 2500 UT*

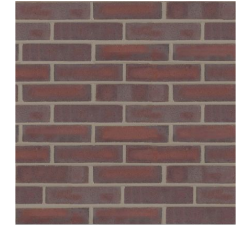
*Punched Windows:
Kawneer 1620 UT*

*Glass:
Triple Glazed
Solarban 60*



View from Wellington Brook

Exterior Materials



Brick

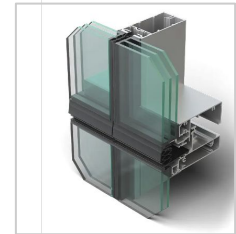
*Sioux City Brick,
Cabernet Burgundy
w/ flamed finish*

*Norman Size in
Running & Stack Bond*



HPL Panel

*Fundermax
Enigma "Nature"*



Glazing

*Curtainwall:
Kawneer 2500 UT*

*Punched Windows:
Kawneer 1620 UT*

*Glass:
Triple Glazed
Solarban 60*



Single-Story Meeting Room Volume: HPL Panel

Exterior Materials



Brick

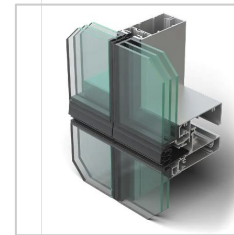
*Sioux City Brick,
Cabernet Burgundy
w/ flamed finish*

*Norman Size in
Running & Stack Bond*



HPL Panel

*Fundermax
Enigma "Nature"*



Glazing

*Curtainwall:
Kawneer 2500 UT*

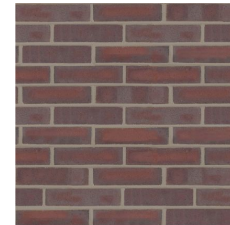
*Punched Windows:
Kawneer 1620 UT*

*Glass:
Triple Glazed
Solarban 60*



Single-Story Meeting Room Volume: Terracotta Shingle

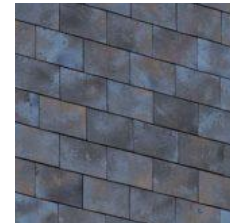
Exterior Materials



Brick

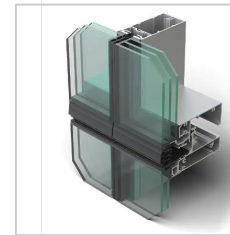
*Sioux City Brick,
Cabernet Burgundy
w/ flamed finish*

*Norman Size in
Running & Stack Bond*



Terracotta Shingle

*Terreal
NeXclad
True Weathered
'Antiqued Pewter'*



Glazing

*Curtainwall:
Kawneer 2500 UT*

*Punched Windows:
Kawneer 1620 UT*

*Glass:
Triple Glazed
Solarban 60*



Single-Story Meeting Room Volume: Terracotta Shingle



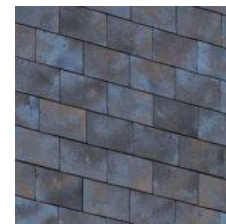
Exterior Materials



Brick

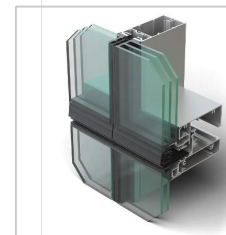
*Sioux City Brick,
Cabernet Burgundy
w/ flamed finish*

*Norman Size in
Running & Stack Bond*



Terracotta Shingle

*Terreal
NeXclad
True Weathered
'Antiqued Pewter'*



Glazing

*Curtainwall:
Kawneer 2500 UT*

*Punched Windows:
Kawneer 1620 UT*

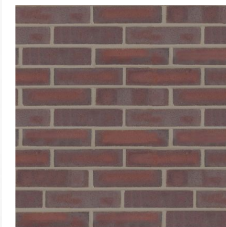
*Glass:
Triple Glazed
Solarban 60*



Single-Story Meeting Room Volume: Terracotta Shingle



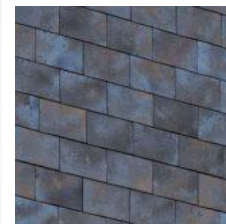
Exterior Materials



Brick

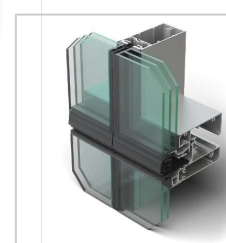
*Sioux City Brick,
Cabernet Burgundy
w/ flamed finish*

*Norman Size in
Running & Stack Bond*



Terracotta Shingle

*Terreal
NeXclad
True Weathered
'Antique Pewter'*



Glazing

*Curtainwall:
Kawneer 2500 UT*

*Punched Windows:
Kawneer 1620 UT*

*Glass:
Triple Glazed
Solarban 60*



Single-Story Meeting Room Volume: Ultra High Performance Concrete Panel

Exterior Materials



Brick

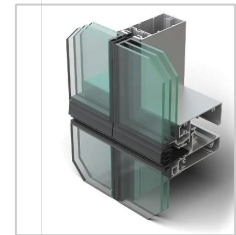
*Sioux City Brick,
Cabernet Burgundy
w/ flamed finish*

*Norman Size in
Running & Stack Bond*



UHPC Panel

*Envel
Format Series
Camelback*



Glazing

*Curtainwall:
Kawneer 2500 UT*

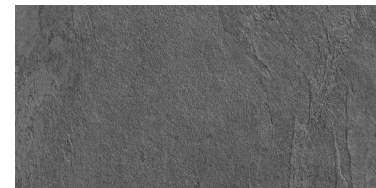
*Punched Windows:
Kawneer 1620 UT*

*Glass:
Triple Glazed
Solarban 60*



Library Commons

Porcelain Tile:



LEA, Waterfall
Grey Flow

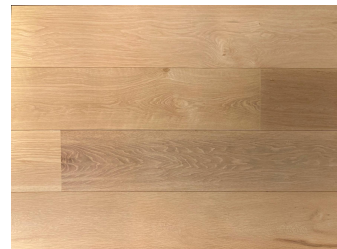


Wood slat wall panel



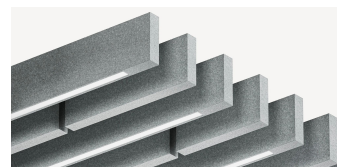
Community Room

Wood Flooring:

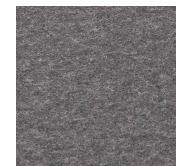


Carlisle Wide Plank Flooring,
White Oak, Signature Grade

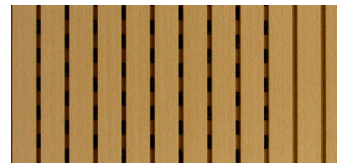
Ceiling Baffles:



Turf Design, Slab & Slab LED,
Storm



Acoustic Wall Panel:



Certainteed, Decoustics Solo P,
American White Oak



Children's Wing

Carpet:



Interface, Play the Angle,
Beryllium

Ceiling Baffles:



Turf, Plaid,
Topo Green



Children's Wing - Historic Stained Glass Feature Wall

Carpet:



Interface, Play the Angle,
Beryllium



Cabinet / Countertop:

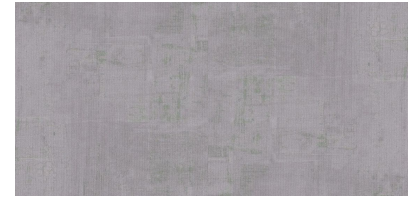


Abet Laminati
Laminate
Verde Sub



Formica
Laminate
Natural Ash

LVT:



Milliken, Light Wash,
Opaque

Children's Activity Center - West



Children's Activity Center - East



Kref Wall (w/ accessories)

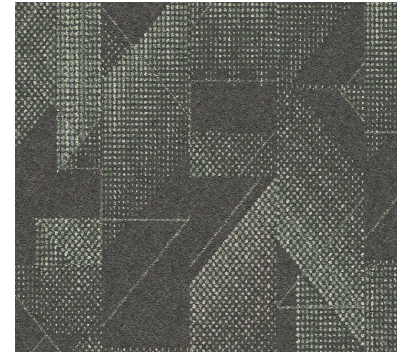


Peg Board Wall (stick-built)



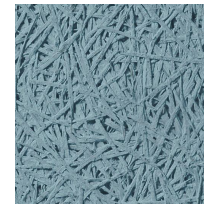
Meeting Room

Carpet:



Interface, Spandrel,
Beryllium

Acoustical Wall Panels:

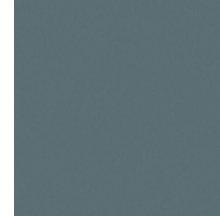


Baux, Acoustical Wood Wool,
Sky Antique Blue



Staff Break Room

Cabinets:



Formica, Laminate,
Winter Sky

Countertop:



Wilsonart, Quartz,
River Glen

LVT Floor:

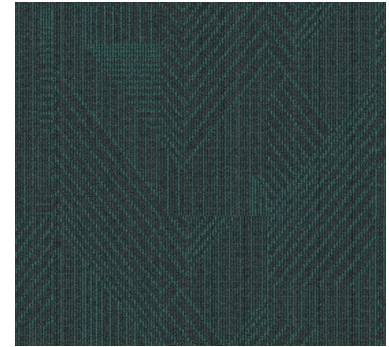


Interface, Northern Grain,
Antique Wash



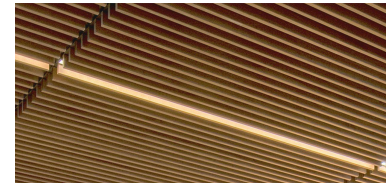
Adults

Carpet:



Interface, Play the Angle,
Chromium

Ceiling Baffles:

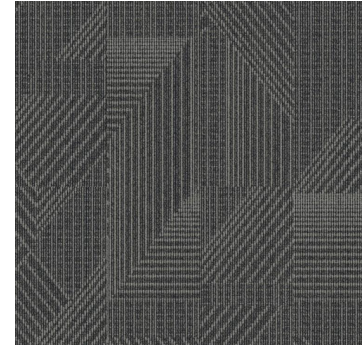


Armstrong, Woodworks Grille,
Golden Maple



Quiet Reading Room

Carpet:

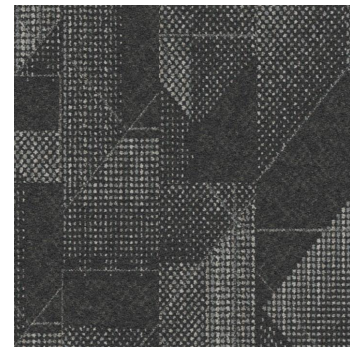


Interface, Play the Angle,
Nitrogen



Underwood History Room

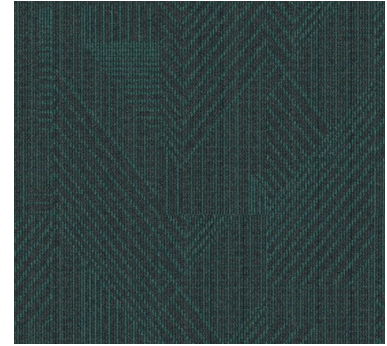
Carpet:



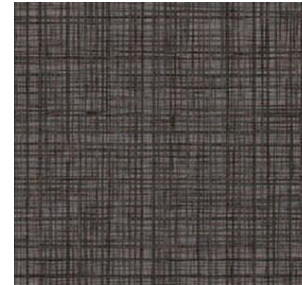
Interface, Spandrel,
Nitrogen



Carpet:



Interface, Play the Angle,
Chromium

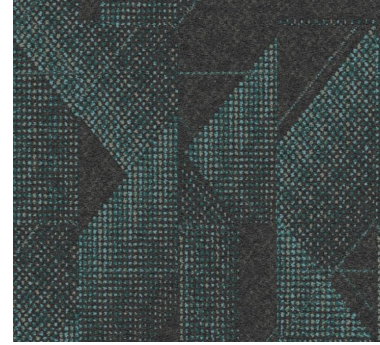


Interface, Native Fabric,
Mulberry



Teen's Wing

Carpet:

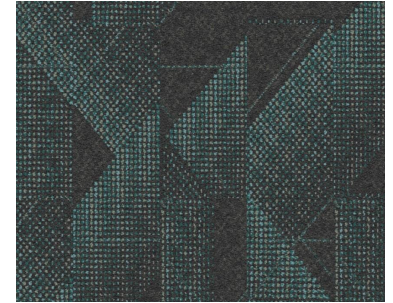


Interface, Spandrel,
Chromium



Teens

Carpet:

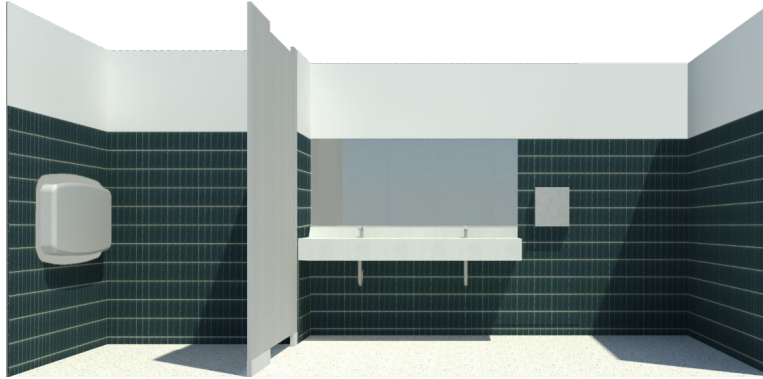


Interface, Spandrel,
Chromium

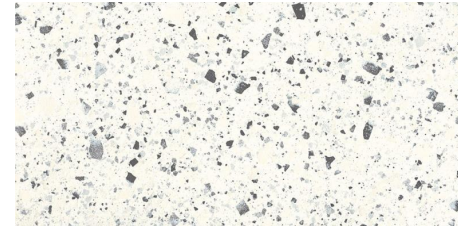
Acoustical Wall Panels:



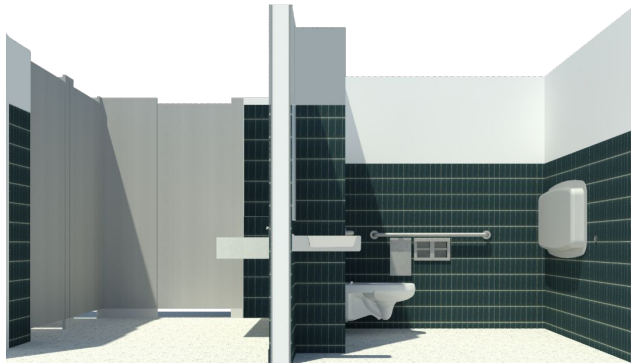
Baux, Acoustical Wood Wool,
Sky Antique Blue



Floor Tile:



Creative Materials Corp, Frammento,
White Black Macro



Wall Tile:



WOW, Fayenza,
Peacock Blue



WOW, Fayenza,
Fern