

# Belmont Public Library

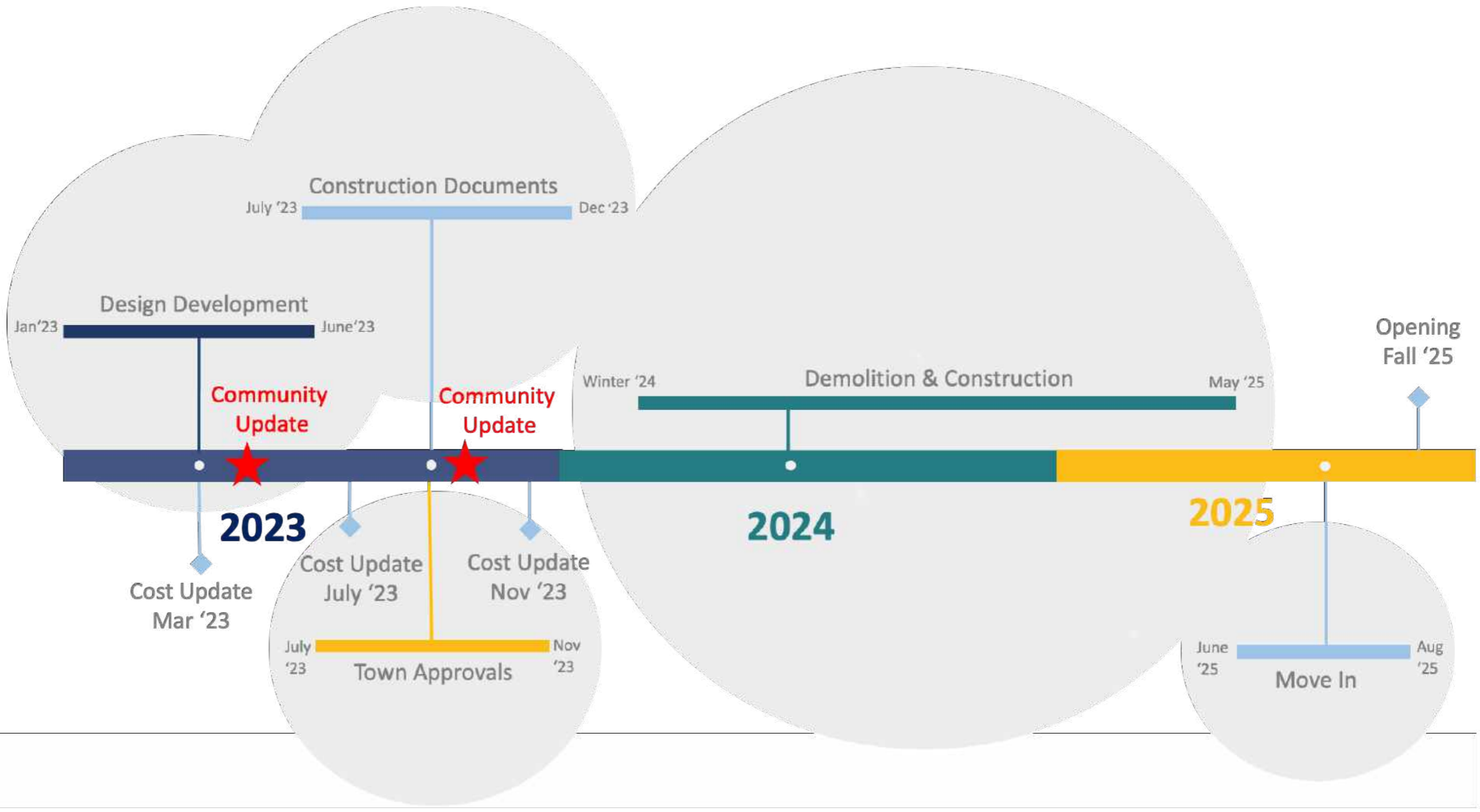
---

Community Presentation

April 25, 2023



# Library Building Project – Schedule



# Library Building Project – Budget

**\$ 39.5M**

***Total Project Cost***

*Less \$5.0M*

***Private Fundraising***

- 
- **Cost estimates will be reassessed multiple times in 2023 - April, July, and November**
  - **Current project costs are within forecasted budget**
  - **Funds from fundraising efforts currently available to the town \$1 million with an additional \$1.1 million available in May**

## **2019 Schematic Design Process**

- January - December 2019 (12 months)
- Bi-weekly meetings with Library Building Committee
- Library staff meetings
- Focus group meetings (Veterans, Historical Society, Council on Aging, etc.)
- Meetings with town agencies
- Net Zero Energy feasibility study
- Three community meetings (March, May, November 2019)
- Online survey

## **2023 Design Development Process**

- January - April 2023 (4 months to date)
- Design updates per 2019-2022 community feedback and Covid lessons learned
- Construction cost estimate update
- Bi-weekly meetings with Library Building Committee
- Additional focus group meetings
- Additional meetings with town agencies

## What We Heard

- Strong interest in accommodating small meeting / quiet study spaces
- Overwhelming support for Children's wing on the ground floor
- Excitement about having the main entrance level with Concord Avenue
- Wood and brick materials as tie-ins to existing building fabric of Belmont
- Enthusiasm for making Wellington Brook a part of the Library landscape
- Interest in a user experience that takes advantage of views and access to outdoors
- Strong interest in net zero energy outcome

## Opportunities for Improvement

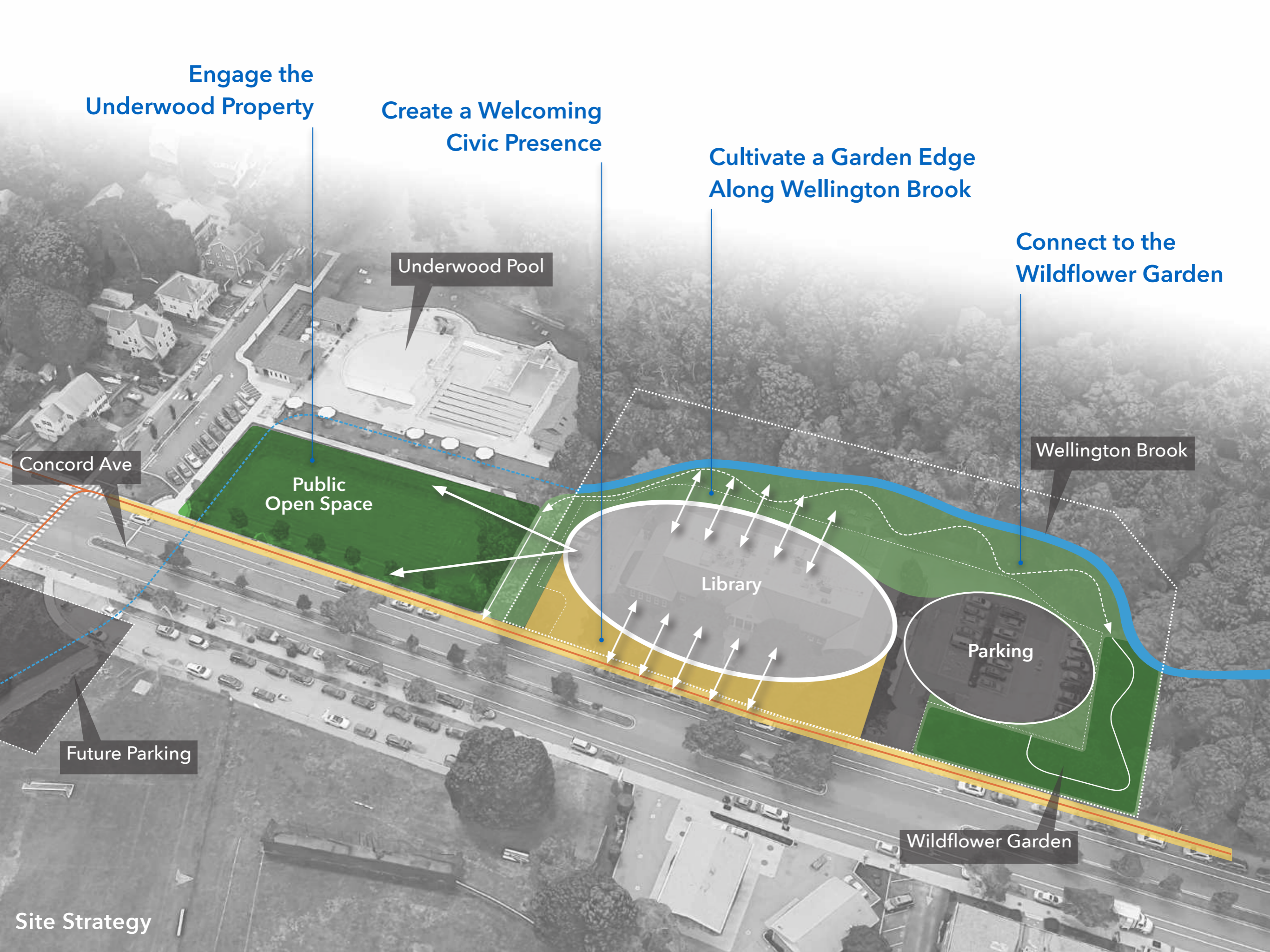
- Commons stair
- Quiet areas and study carrels in the Adults wing
- Outdoor reading porch size and seasonal limitations
- Additional mechanical and storage space

Engage the Underwood Property

Create a Welcoming Civic Presence

Cultivate a Garden Edge Along Wellington Brook

Connect to the Wildflower Garden



Underwood Pool

Concord Ave

Public Open Space

Library

Wellington Brook

Parking

Future Parking

Wildflower Garden

Site Strategy



Concord Avenue

**PARKING  
(42 Spaces)**

**NEW LIBRARY**

New Entry to Woodland Garden

Garden Shed

New Entry to Wildflower Garden

Entry / Civic Terrace

Veteran's Memorial

Flag Pole

Stormwater Swale Garden

Drop Off

(6) EV parking spaces

Book Drop

Library Terrace

Reading / Lunch Lawn

South Entry Terrace

Tupelo Grove

Wellington Brook

Brookside Amphitheater

Interactive Stormwater Garden

Wellington Brook

Boardwalk Overlook

Parking Lot Stormwater Garden

Existing Underwood Lawn

Underwood Pool

Site Plan

**Underwood  
Lawn**

**Wellington  
Brook**

**Concord  
Avenue**

**Parking  
(42 Spaces)**

**Ground Floor Plan**





Underwood  
Lawn

Wellington  
Brook

Concord  
Avenue

**ENTRY**

Book  
Drop

Veterans  
Memorial

Parking  
(42 Spaces)

Ground Floor Plan



Underwood  
Lawn

Wellington  
Brook

**LIBRARY  
COMMONS**

**ENTRY**

Concord  
Avenue

**Parking  
(42 Spaces)**

Ground Floor Plan





Community Meeting Room

Vending

Mens

Womens

WC

Storage

Commons Stair

Flexible Seating

New Materials

Info Desk

# LIBRARY COMMONS

Self Check-Out

Circulation Workroom

Commons Lounge

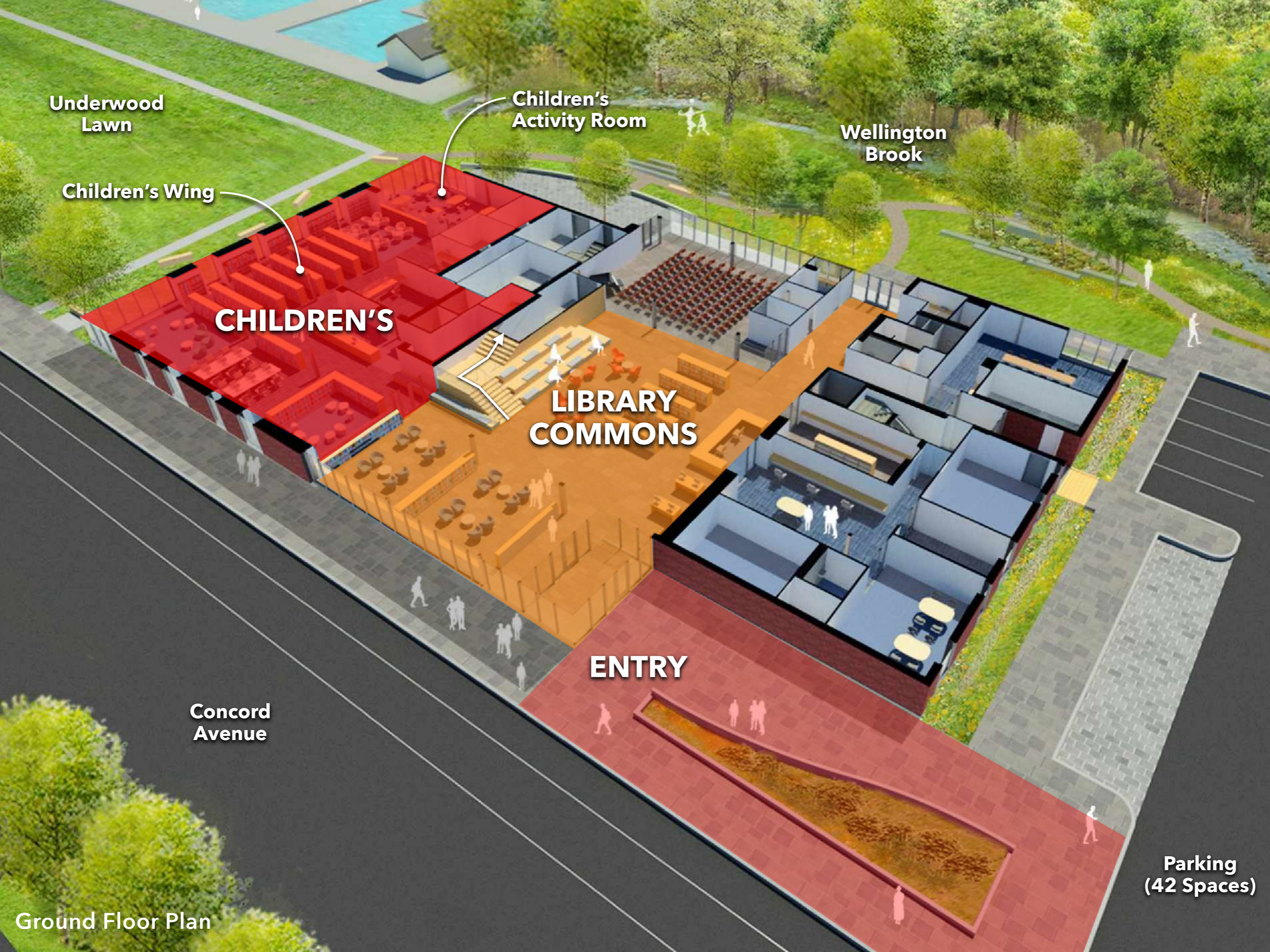
Entrance

Children's Wing

Ground Floor Plan



Library Commons



Underwood  
Lawn

Children's  
Activity Room

Wellington  
Brook

Children's Wing

**CHILDREN'S**

**LIBRARY  
COMMONS**

**ENTRY**

Concord  
Avenue

Parking  
(42 Spaces)

Ground Floor Plan



Children's Wing

Underwood  
Lawn

**CHILDREN'S**

**MEETING**

Community  
Meeting Room

Meeting  
Room

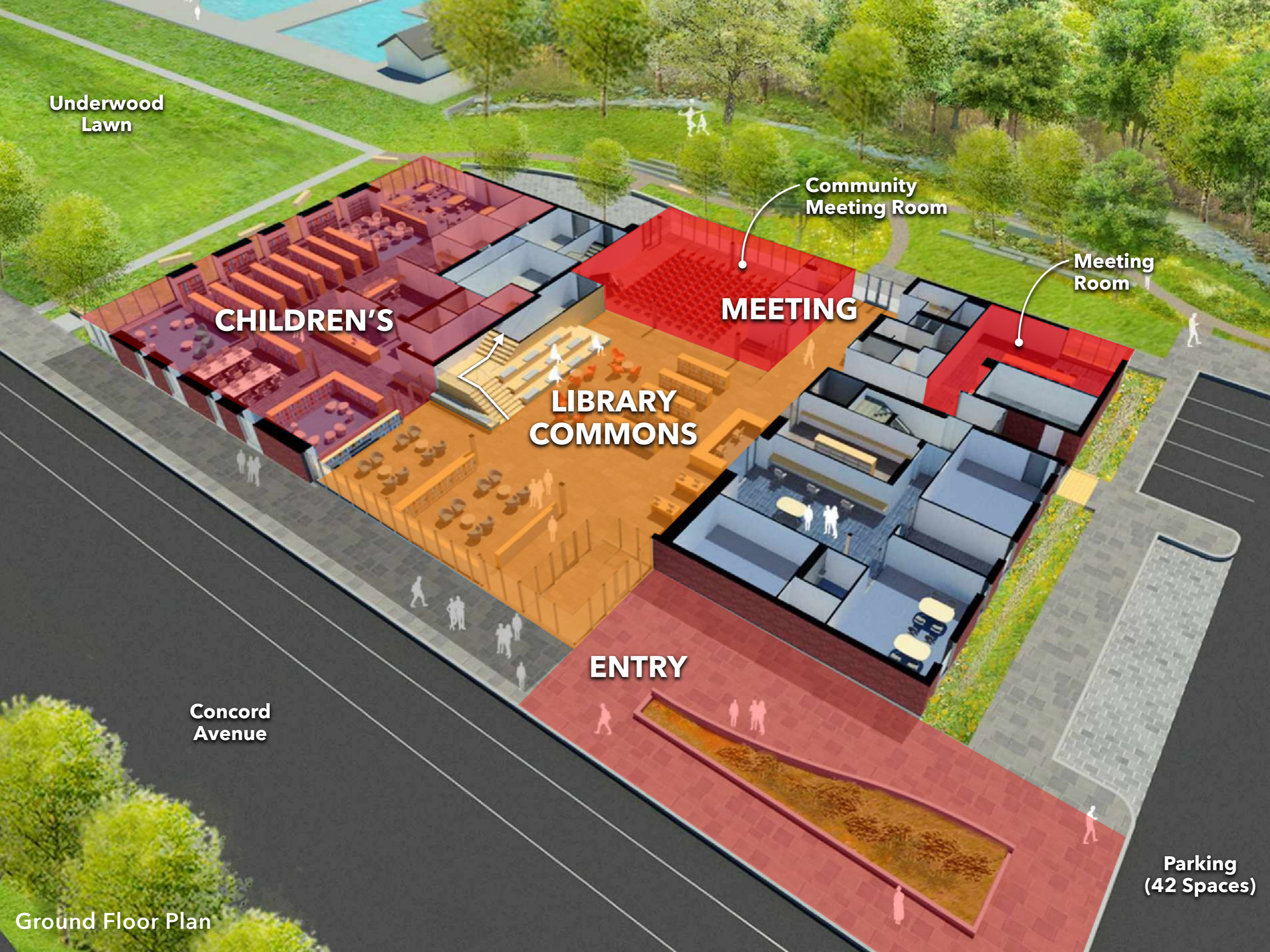
**LIBRARY  
COMMONS**

**ENTRY**

Concord  
Avenue

Parking  
(42 Spaces)

Ground Floor Plan



Underwood  
Lawn

**CHILDREN'S**

**LIBRARY  
COMMONS**

**AFTER HOURS  
ACCESS**

Community  
Meeting Room

Meeting  
Room

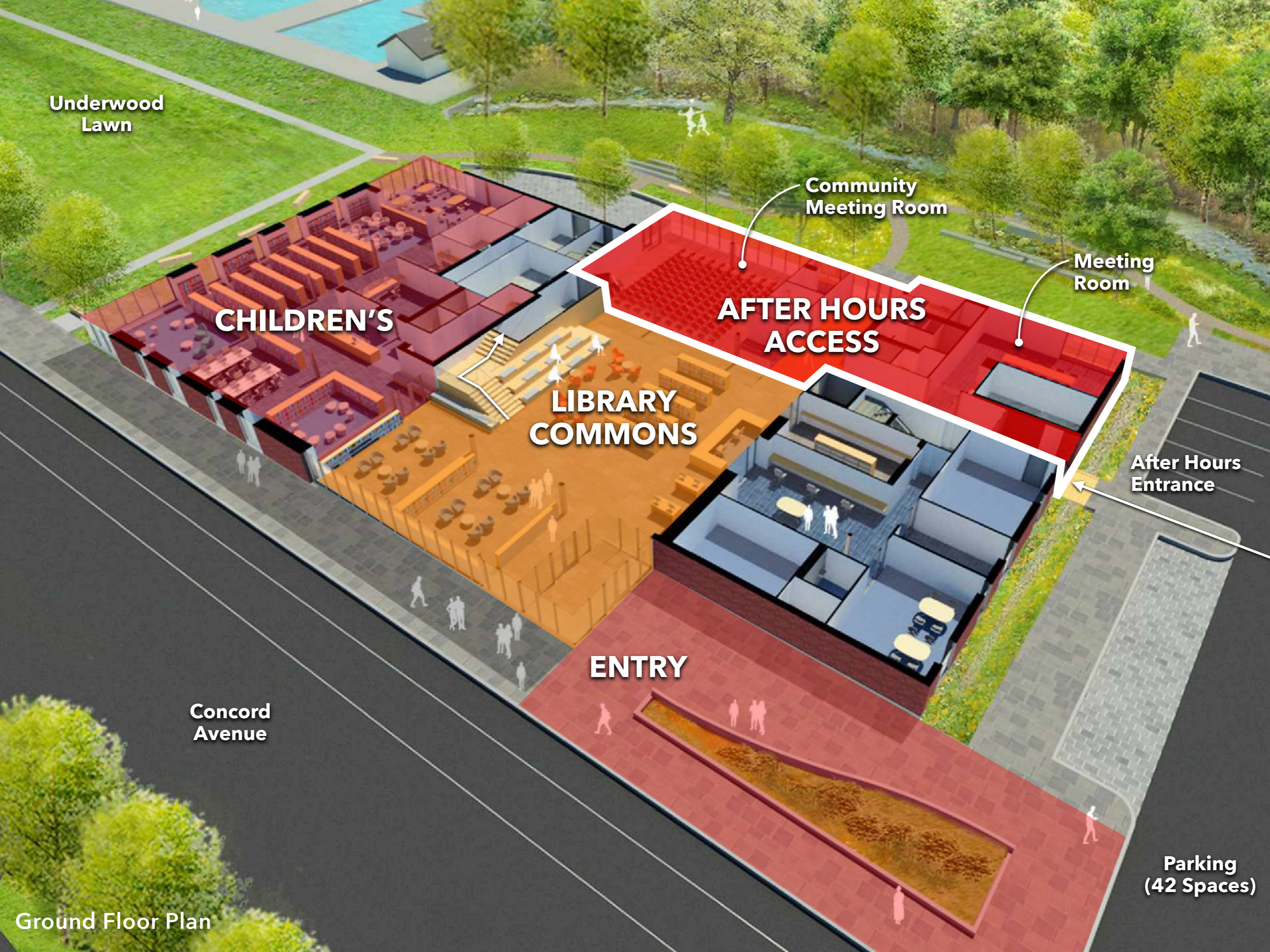
After Hours  
Entrance

**ENTRY**

Concord  
Avenue

Parking  
(42 Spaces)

Ground Floor Plan







Community Room

Underwood  
Lawn

**CHILDREN'S**

**MEETING**

**LIBRARY  
COMMONS**

**STAFF &  
SUPPORT**

**ENTRY**

Concord  
Avenue

Staff and  
Deliveries  
Entrance

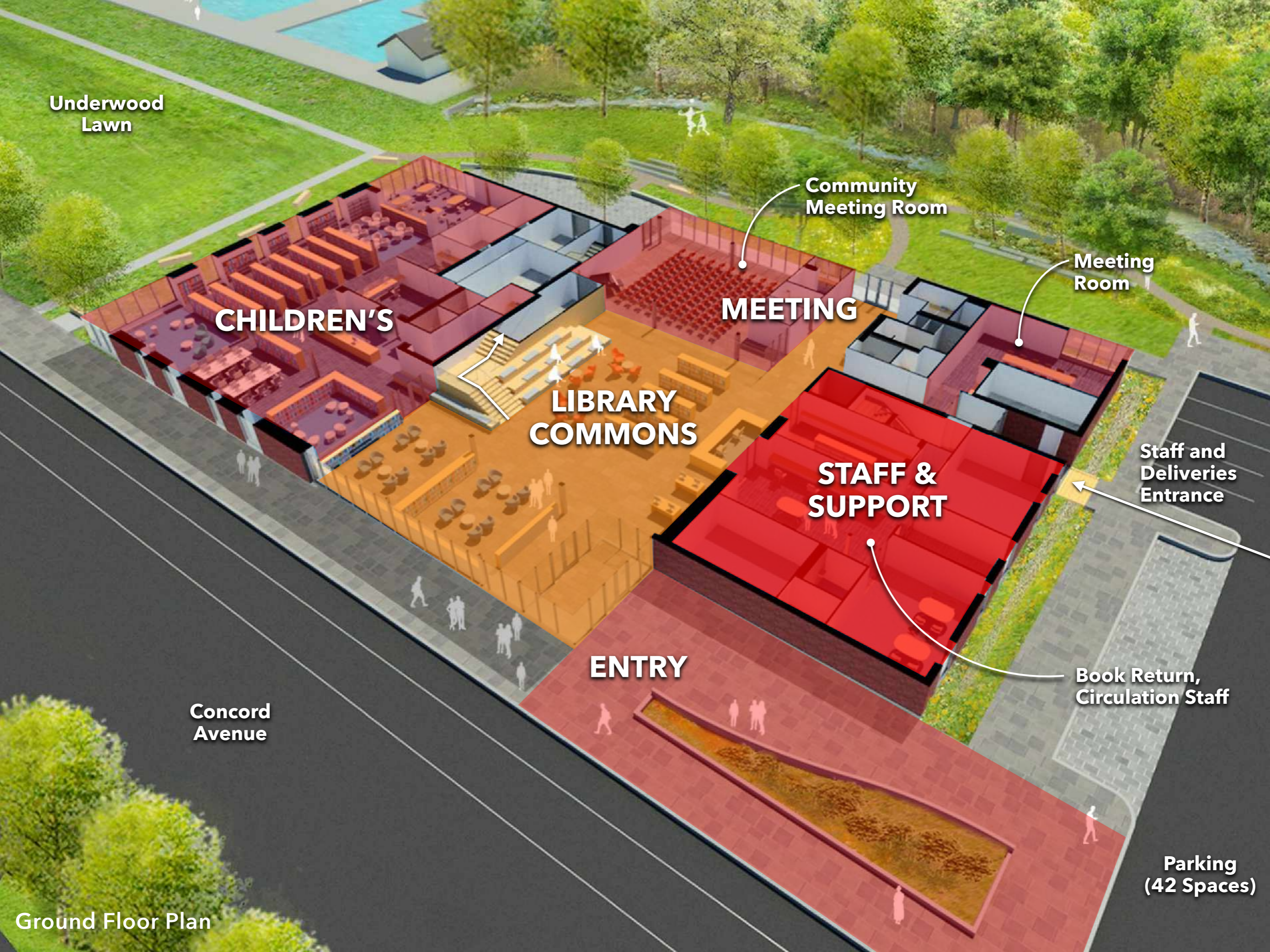
Book Return,  
Circulation Staff

Parking  
(42 Spaces)

Community  
Meeting Room

Meeting  
Room

Ground Floor Plan





Library Commons

Concord Avenue

Second Floor Plan



Periodicals

Outdoor Reading Porch

Reference Desk

ADULT

Library Commons

Concord Avenue

Second Floor Plan



Second Floor Overlooking Library Commons



Periodicals and Outdoor Reading Porch



**QUIET  
READING**

**ADULT**

**Library  
Commons**

**Concord  
Avenue**

**Second Floor Plan**



**QUIET  
READING**

**STUDY  
ROOMS**

**ADULT**

**Library  
Commons**

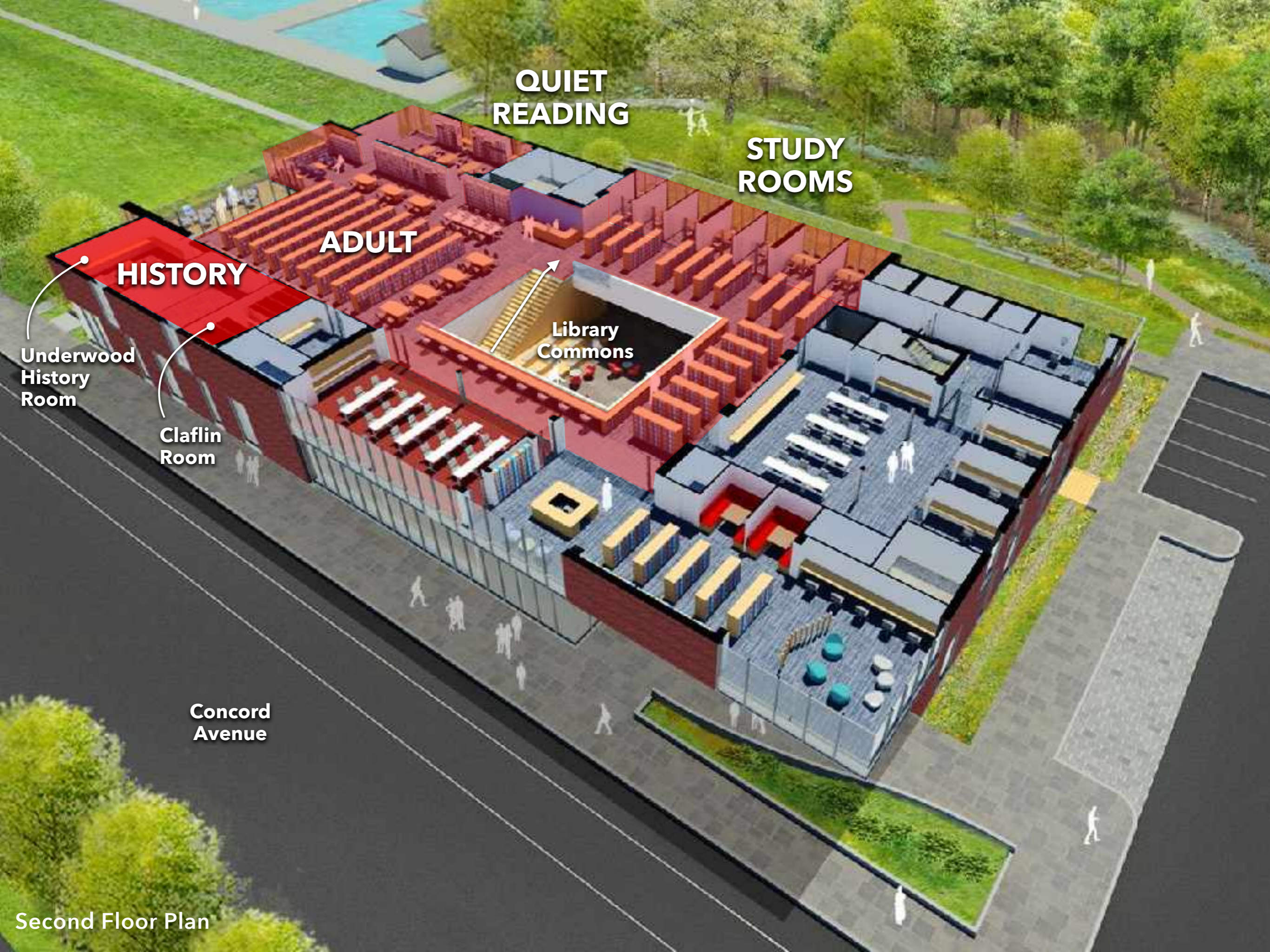
**Concord  
Avenue**

**Second Floor Plan**





Study Rooms



**QUIET  
READING**

**STUDY  
ROOMS**

**ADULT**

**HISTORY**

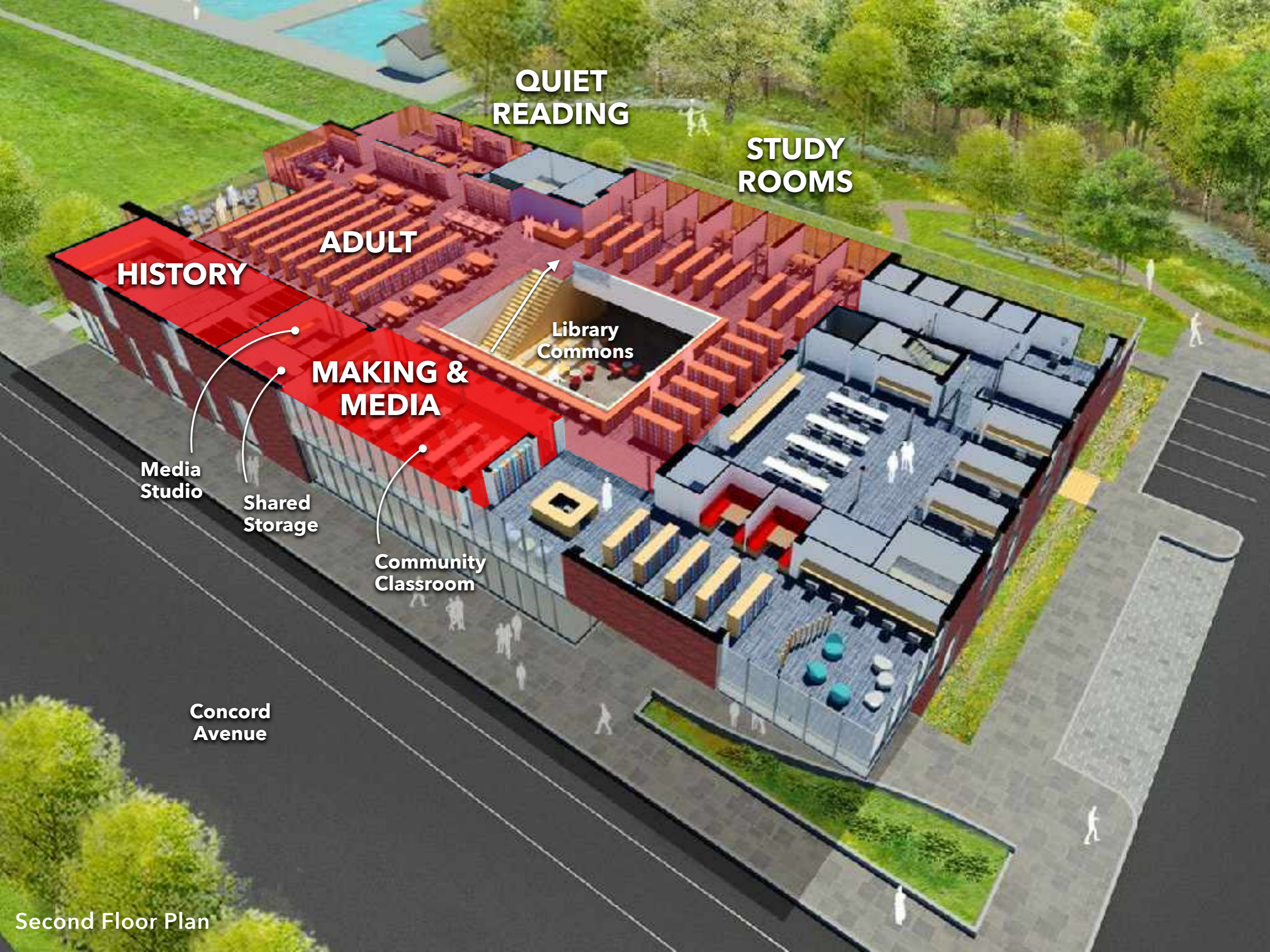
**Library  
Commons**

**Underwood  
History  
Room**

**Claflin  
Room**

**Concord  
Avenue**

**Second Floor Plan**



**QUIET  
READING**

**STUDY  
ROOMS**

**ADULT**

**HISTORY**

Library  
Commons

**MAKING &  
MEDIA**

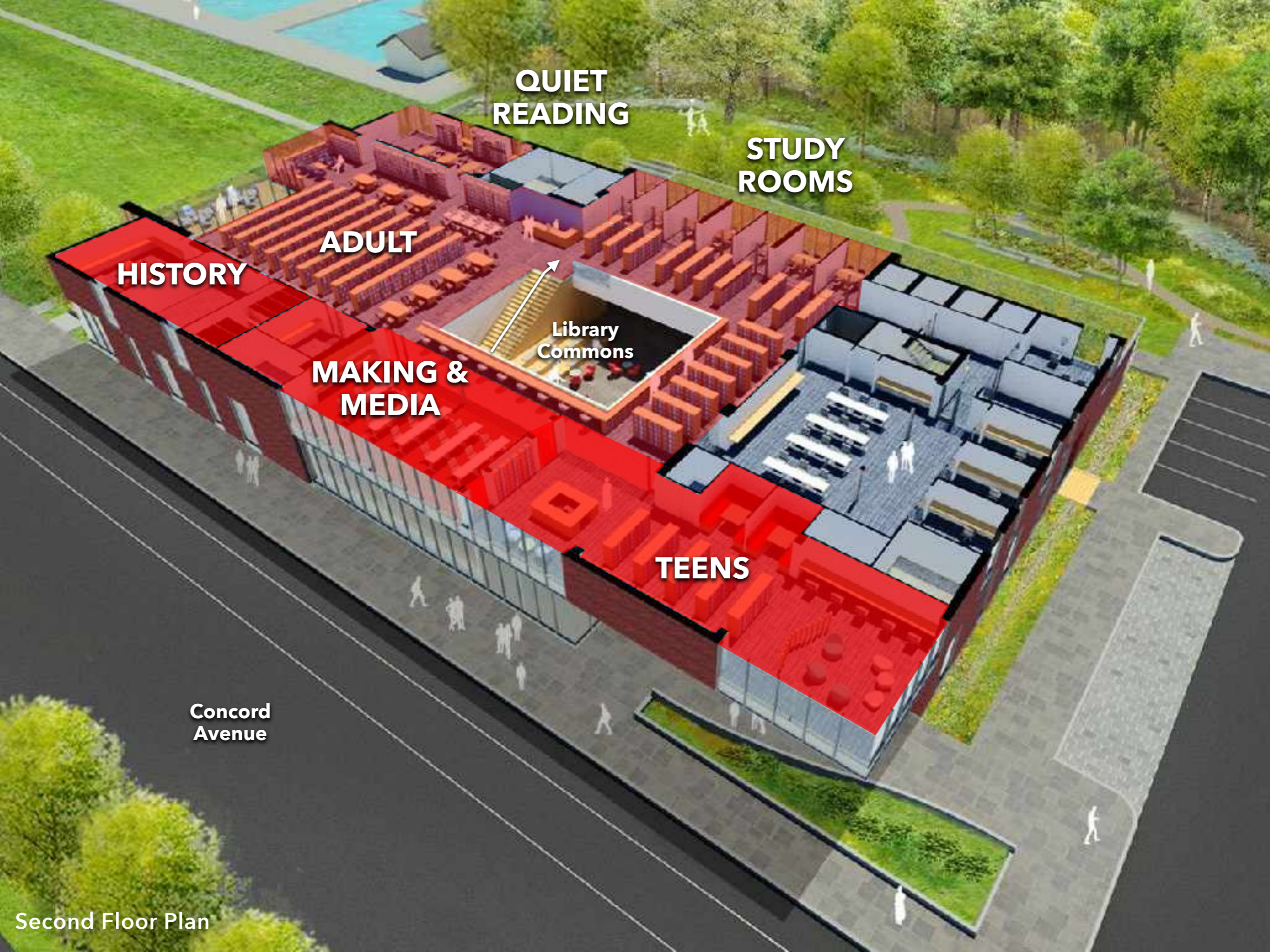
Media  
Studio

Shared  
Storage

Community  
Classroom

Concord  
Avenue

Second Floor Plan



**QUIET  
READING**

**STUDY  
ROOMS**

**ADULT**

**HISTORY**

Library  
Commons

**MAKING &  
MEDIA**

**TEENS**

**Concord  
Avenue**

**Second Floor Plan**



Teens Wing



**QUIET  
READING**

**STUDY  
ROOMS**

**HISTORY**

**ADULT**

Library  
Commons

**MAKING &  
MEDIA**

**STAFF &  
SUPPORT**

**TEENS**

Staff Workroom  
& Offices

Concord  
Avenue

Second Floor Plan



**MECHANICAL**

**Concord Avenue**

**Penthouse Plan**



**PV ARRAY**

**Concord Avenue**

**Roof Plan**





Aerial View Looking Southeast



View Across Concord Avenue



Belmont Town Hall  
Henry W. Hartwell, 1881



Homer Municipal Building  
Ebenezer Homer, 1899



Underwood Memorial Library  
William Ralph Emerson, 1902

**Materiality** Language of Belmont Municipal Buildings



View Across Underwood Lawn



View Across Underwood Lawn

## ENERGY EFFICIENT BUILDING SYSTEMS

An all-electric VRF mechanical system contributes to a Zero Net Energy-ready building by eliminating fossil fuel use and reducing energy consumption through its high efficiency operation



## NATURAL DAYLIGHTING

Natural light is invited deep into the library interior to illuminate reading spaces and reduce electric lighting loads



## SOUTH FACING SOLAR PANELS

Roof-mounted photovoltaic (PV) panels contribute directly to the library's energy needs and reduce the building's overall ecological footprint

## NATIVE PLANT SPECIES

Native species are restored along the banks of Wellington Brook to maintain the longevity of the brook landscape and provide an inviting teaching tool



## HIGH PERFORMANCE BUILDING ENVELOPE

The library's walls, roof and windows are highly insulated to limit energy transfer and maximize the efficiency of heating and cooling systems



## HEALTHY MATERIALS

Interior finishes and furniture use sustainable materials to ensure the long term health and wellbeing of the library occupants and library collection

## STORMWATER MANAGEMENT

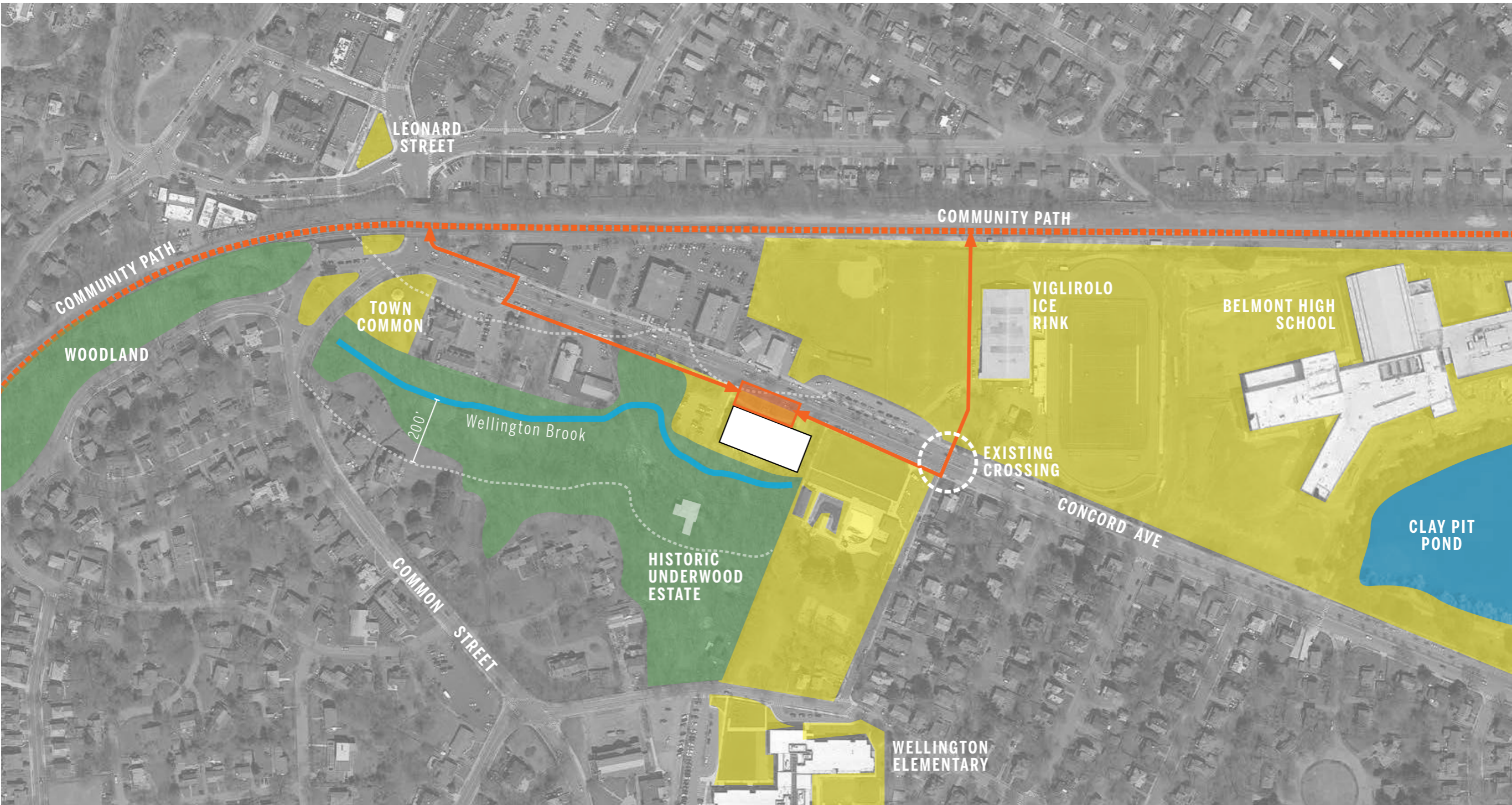
Vegetated swales and rain gardens capture and filter rainwater while runoff is reduced using permeable paving in place of conventional asphalt



## ACTIVE LANDSCAPE

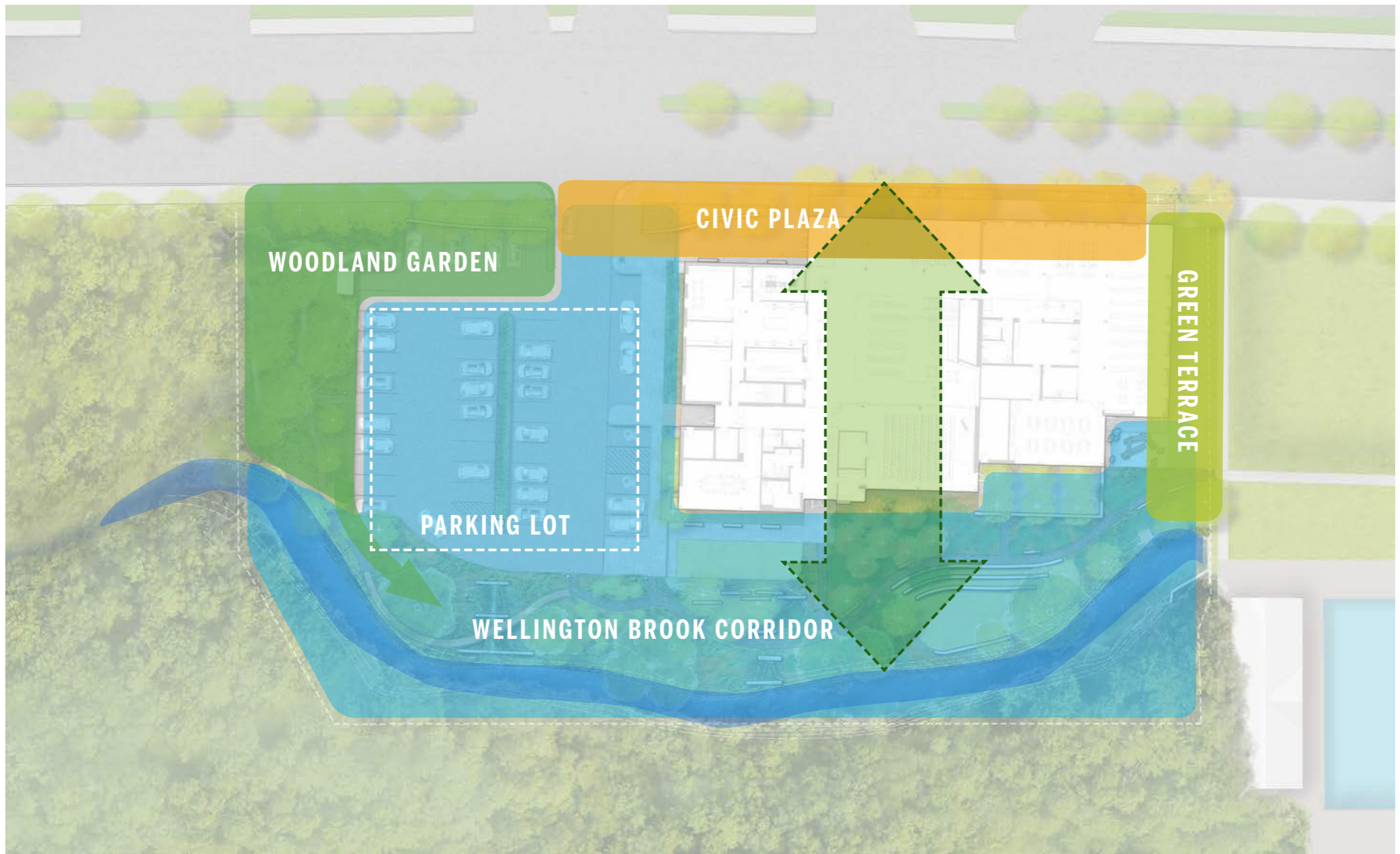
Outdoor walking paths and intimate reading spaces create an active landscape along Wellington Brook linking the library, Woodland Garden and Underwood Pool & Playground

Wellington Brook



## DESIGN: Proposed Site Connections

BELMONT LIBRARY Belmont, MA  
Schematic Design Remobilization • 04 25 2023



DESIGN: Bringing the Landscape Inside





## WOODLAND GARDEN: Existing Garden

BELMONT LIBRARY Belmont, MA  
Schematic Design Remobilization • 04 25 2023

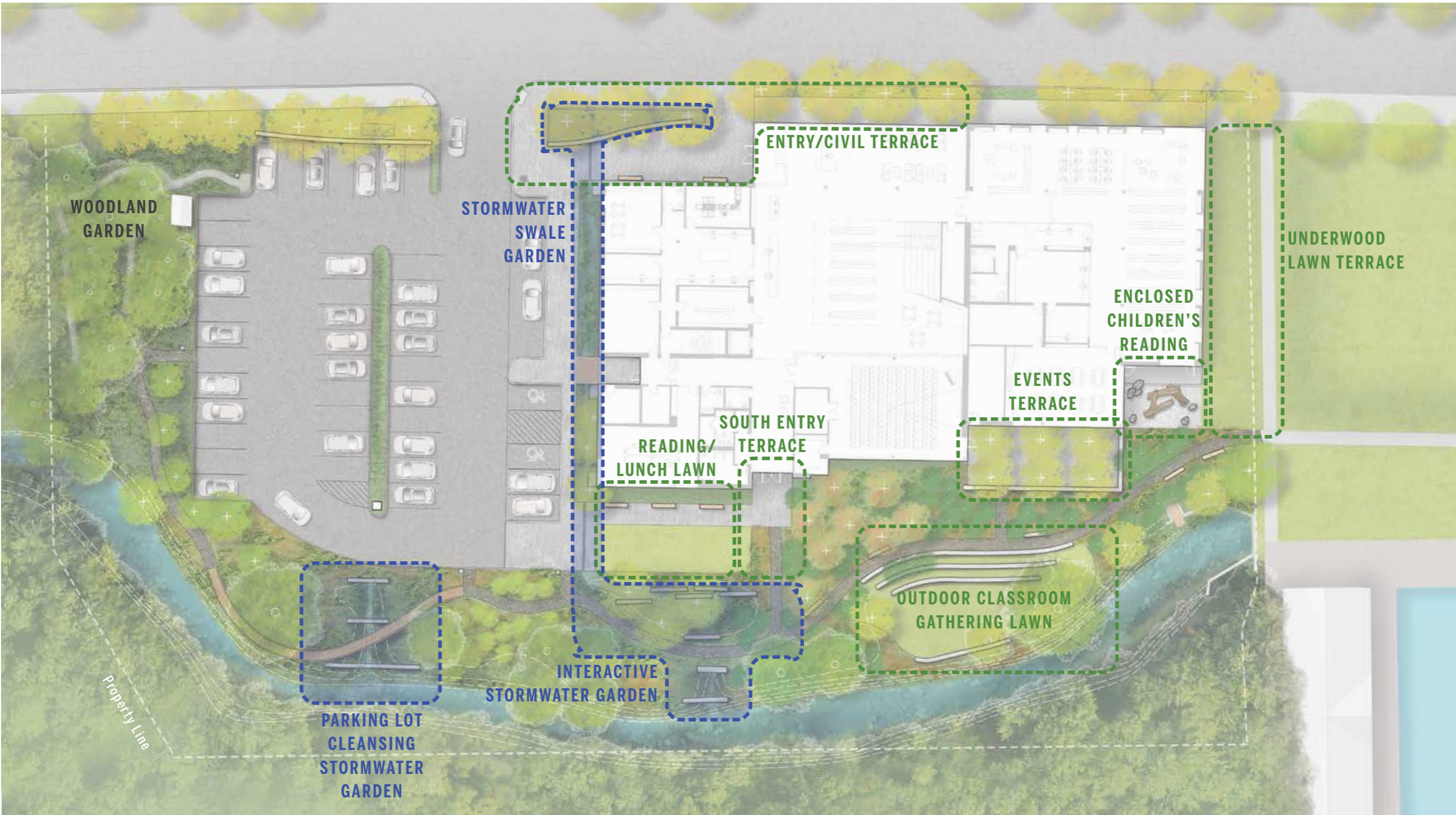
STIMSON



## WELLINGTON BROOK CORRIDOR: Existing Conditions

BELMONT LIBRARY Belmont, MA  
Schematic Design Remobilization • 04 25 2023

STIMSON



## SITE PROGRAM

BELMONT LIBRARY Belmont, MA  
Schematic Design Remobilization • 04 25 2023

STIMSON



## SCHEMATIC DESIGN SITE PLAN

BELMONT LIBRARY Belmont, MA  
 Schematic Design Remobilization • 04 25 2023

STIMSON



## SCHEMATIC DESIGN VIEW

BELMONT LIBRARY Belmont, MA  
Schematic Design Remobilization • 04 25 2023

STIMSON



## SCHEMATIC DESIGN VIEW

BELMONT LIBRARY Belmont, MA  
Schematic Design Remobilization • 04 25 2023

STIMSON



## DRAFT REVISED SITE PLAN

BELMONT LIBRARY Belmont, MA  
 Schematic Design Remobilization • 04 25 2023

STIMSON

# Get Involved | Learn More

## Visit the Library Website

'Building Project' Tab:

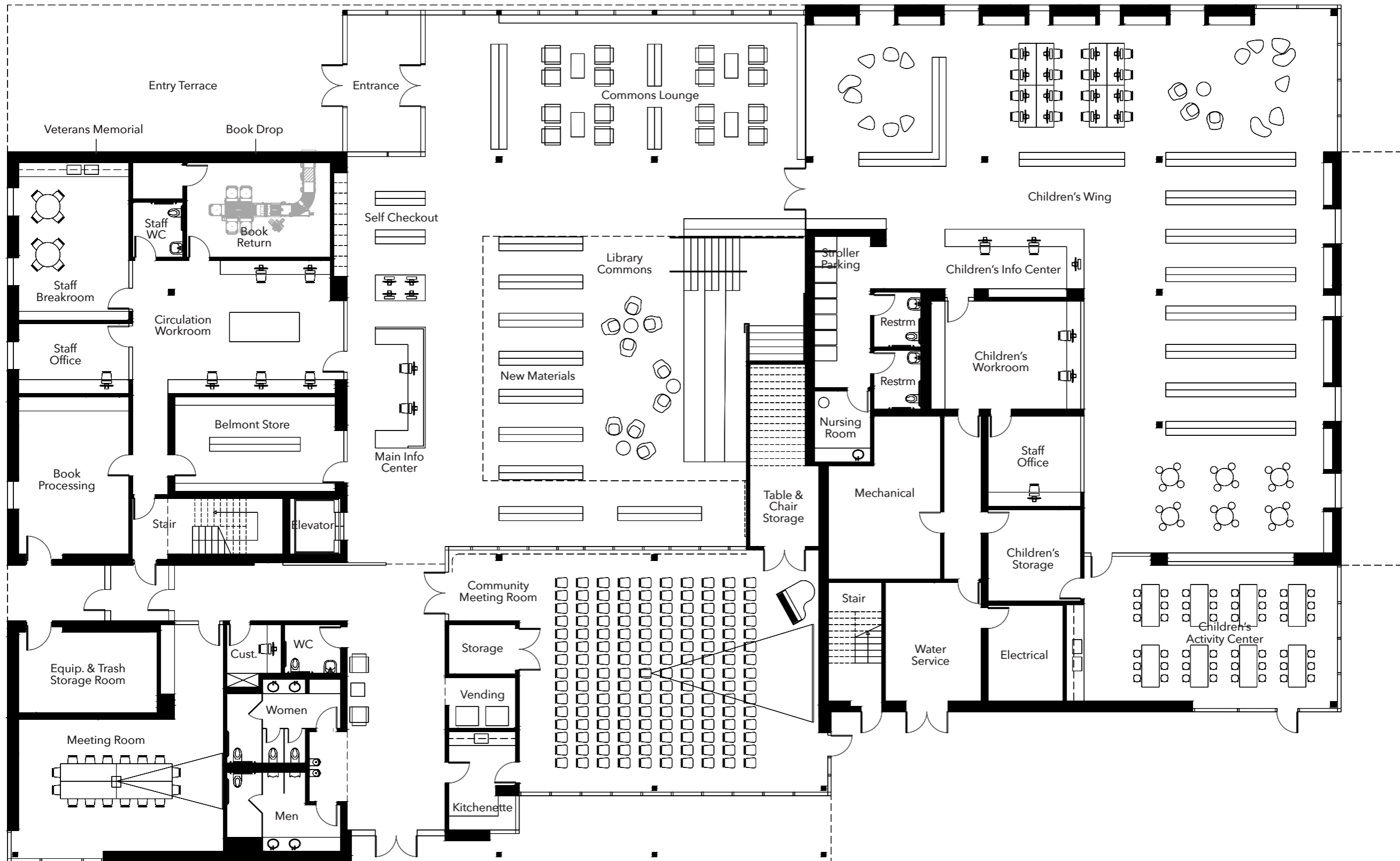
<https://belmontpubliclibrary.net/about/building-committee/>

## Visit The Belmont Library Foundation Website

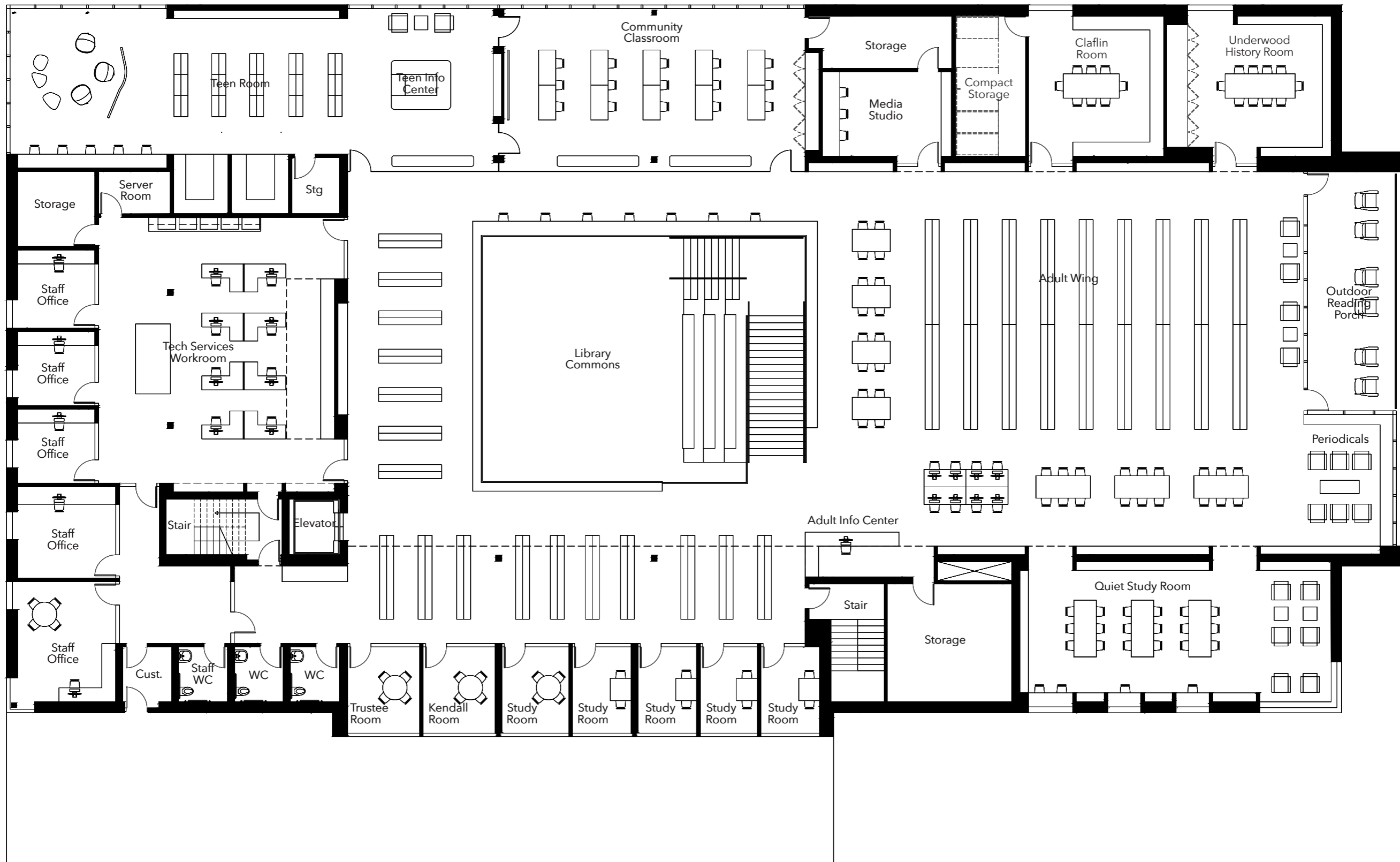
<https://belmontlibraryfoundation.org/>







Ground Floor Plan



Second Floor Plan



**BELMONT**

**PUBLIC**

**LIBRARY**