

Belmont Public Library

Library Building Committee Meeting #7
March 28, 2023



Agenda

1. Welcome Public
2. Approve 3/14/2023 Meeting Minutes
3. Invoices
4. Update
 - a. Contracts
5. Design Update
 - a. Schedule
 - b. Landscape (Stimson)
 - c. Claflin Room Update
6. Public Comment
7. Adjourn

2023

2024

We are here

DESIGN

MOBILIZATION

Jan Feb Mar Apr May Jun Jul Aug Sep Oct Nov Dec Jan Feb

Design Development
6 months

Kick-off Meeting;
Establish Program/Design
Refinement Goals

Geotech.

5/3 - Complete Geotech Report

3/10 - Issue 30% DD Set

Cost Update - CHA only

Cost Update Complete

3/16 Historical Society / Claflin Room Mtg #1

Preliminary Approvals Meeting w/Community Development

4/10 Historical Society / Claflin Room Mtg #2

4/25 - Public Forum
- Present refined design
- Sustainability goals
- Budget and schedule update

7/1 - Issue 100% DD Pricing Set

Cost Estimate #2 - CHA & Design Team

Estimate Review / Reconciliation

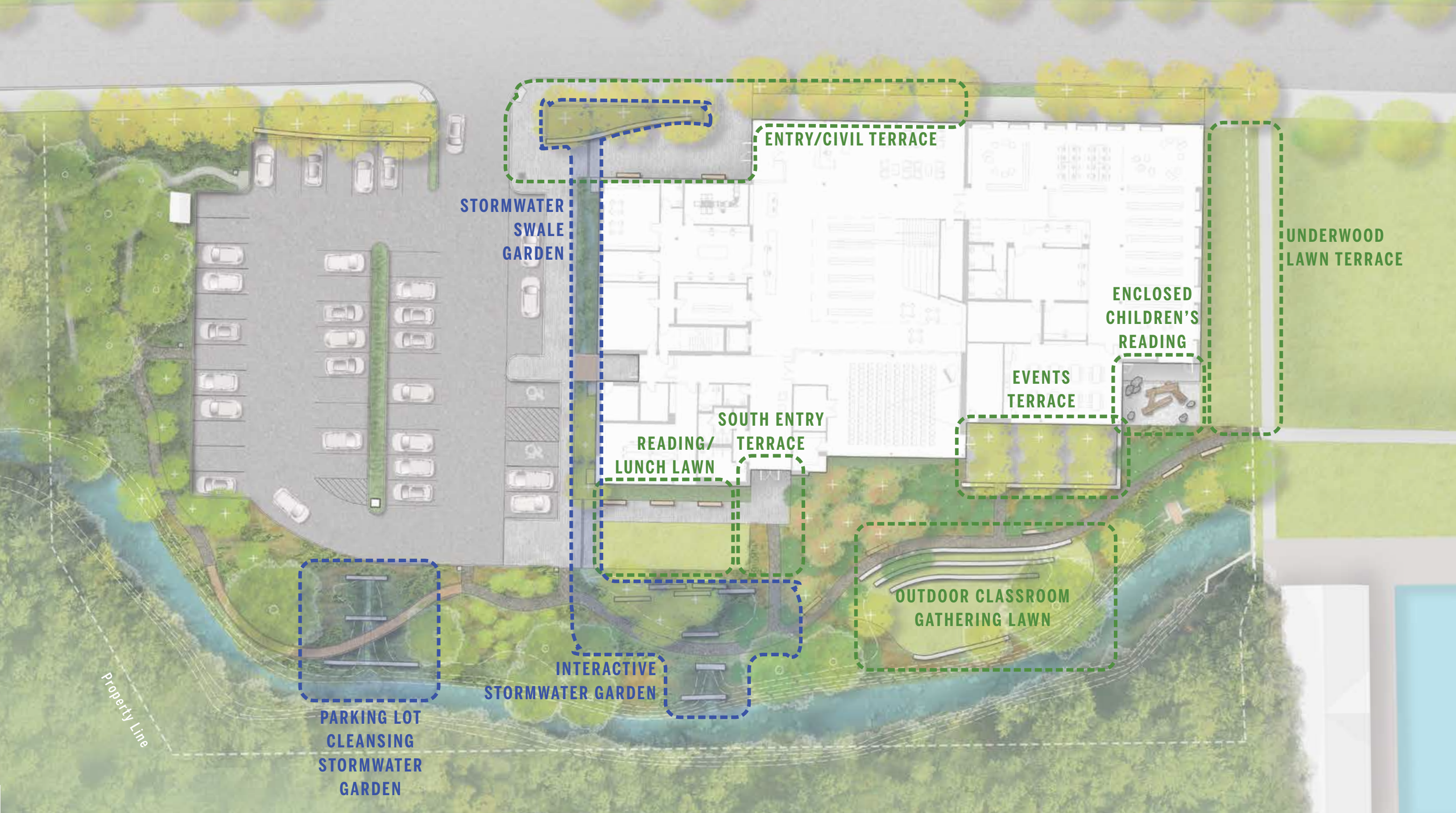
Construction Documents
5.5 months

Town Approvals

HOLIDAYS



DESIGN: Bringing the Landscape Inside



SITE PROGRAM

BELMONT LIBRARY Belmont, MA
Schematic Design • 03 28 2023

STIMSON



SCHEMATIC DESIGN SITE PLAN



SCHEMATIC DESIGN VIEW

BELMONT LIBRARY Belmont, MA
Schematic Design • 03 28 2023

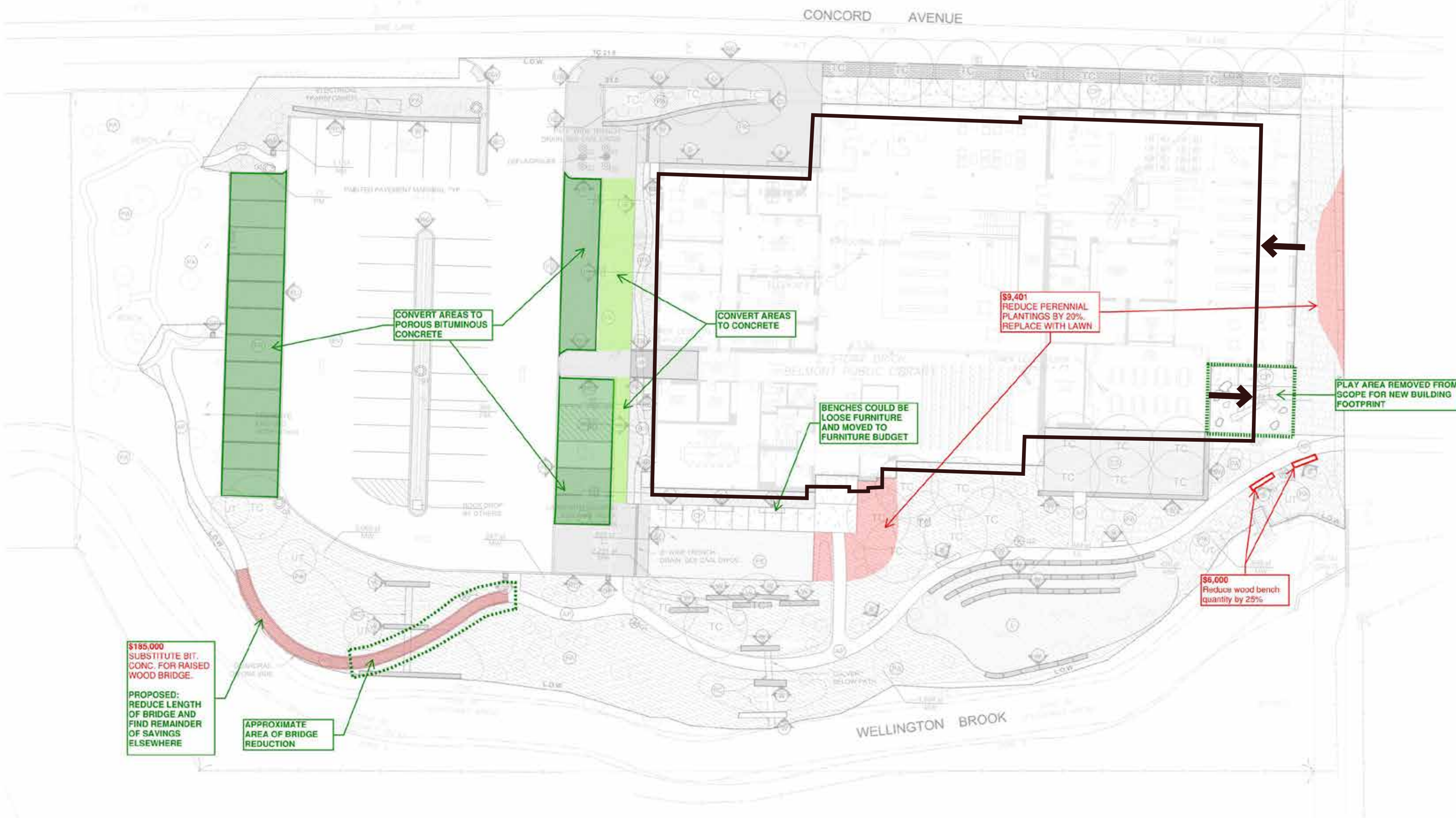
STIMSON



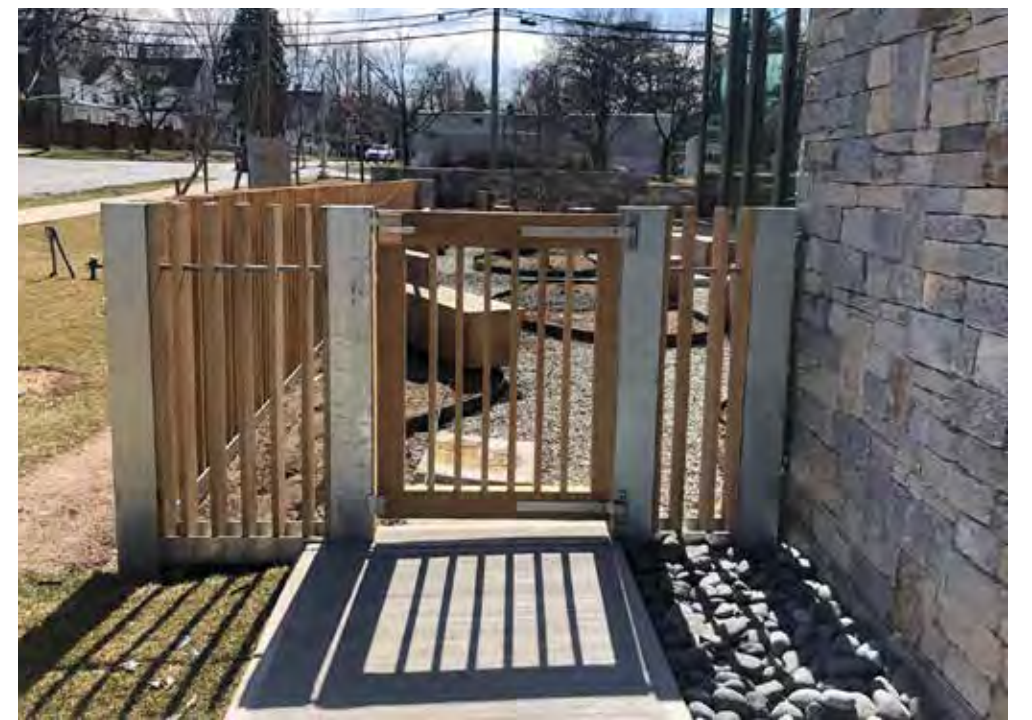
SCHEMATIC DESIGN VIEW

BELMONT LIBRARY Belmont, MA
Schematic Design • 03 28 2023

STIMSON



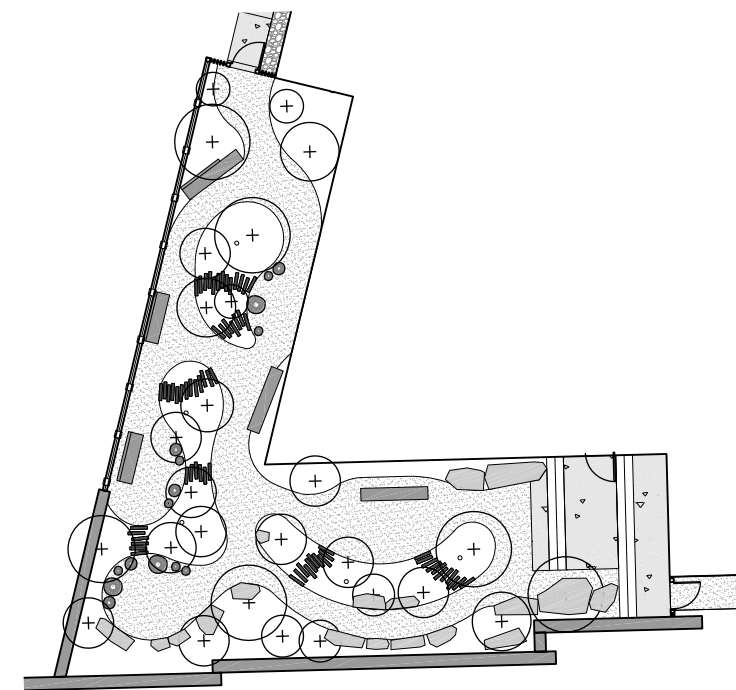
BUILDING FOOTPRINT UPDATES



CHILDREN'S GARDEN PRECEDENT: NEW CANAAN PUBLIC LIBRARY

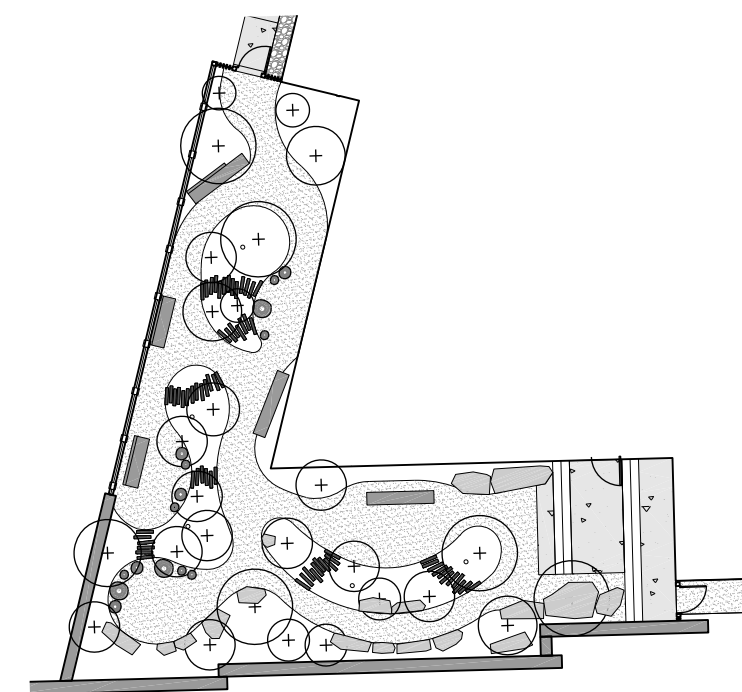
BELMONT LIBRARY Belmont, MA
Schematic Design • 03 28 2023

STIMSON



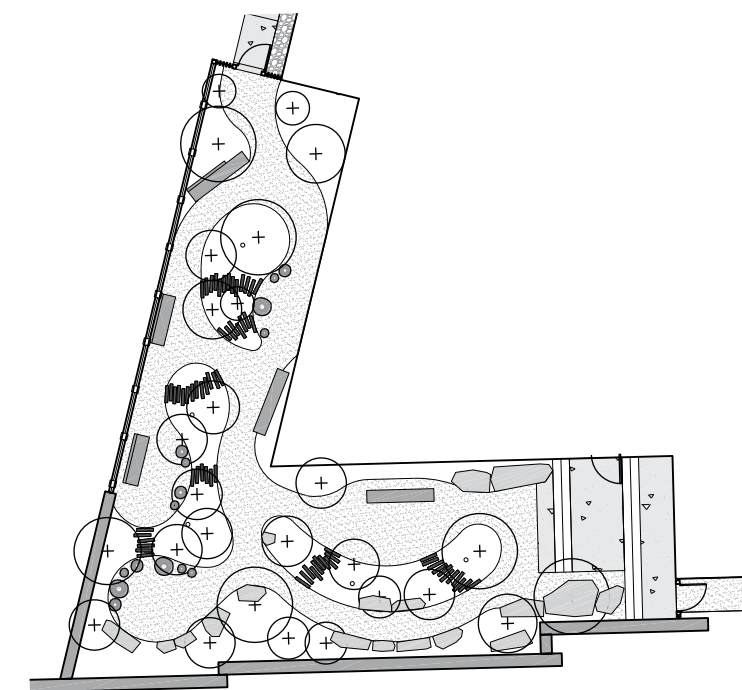
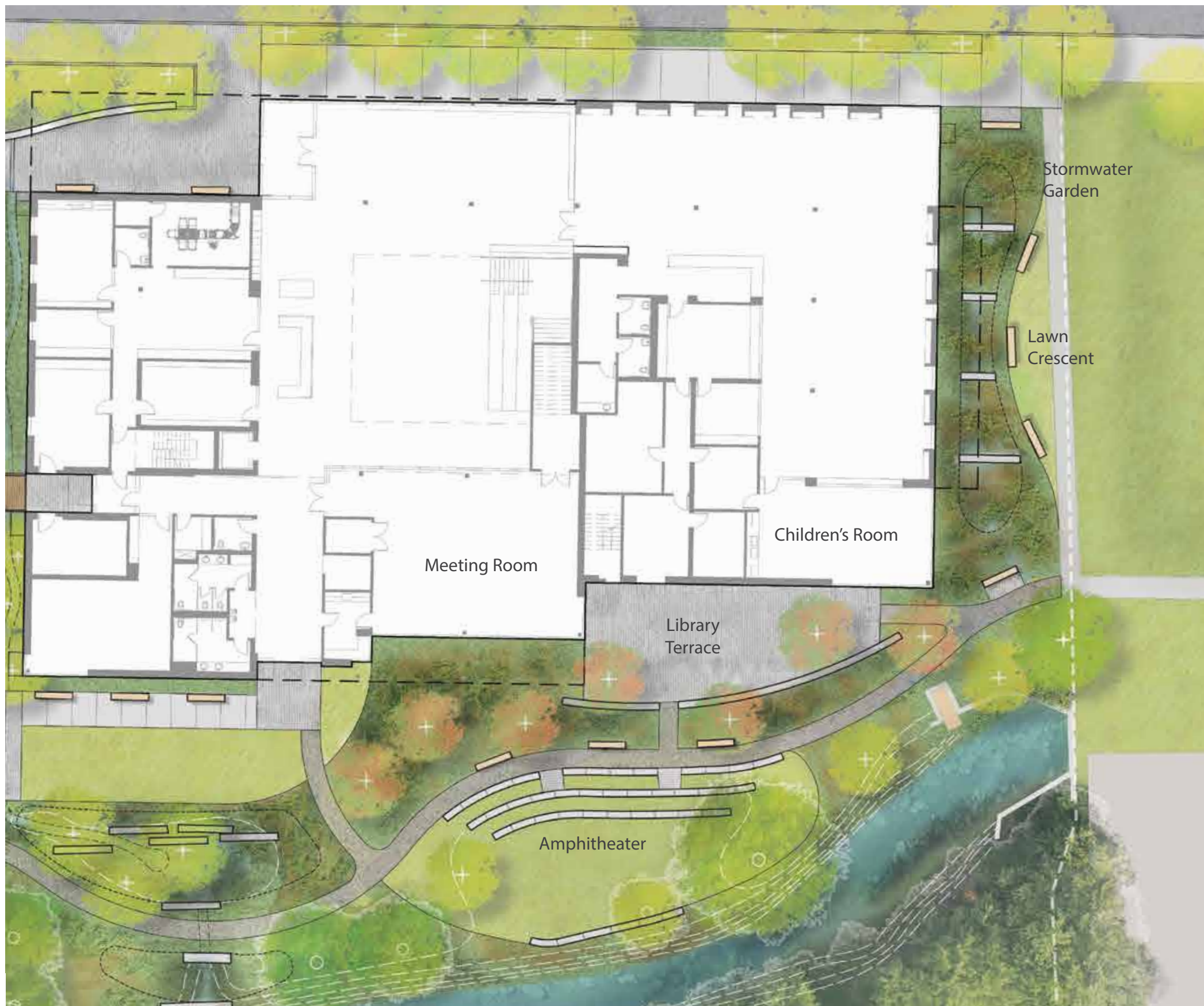
NEW CANAAN PUBLIC LIBRARY
CHILDREN'S GARDEN FOR
SCALE COMPARISON

CHILDREN'S GARDEN STUDY



NEW CANAAN PUBLIC LIBRARY
CHILDREN'S GARDEN FOR
SCALE COMPARISON

TERRACE + CHILDREN'S GARDEN STUDY



NEW CANAAN PUBLIC LIBRARY
CHILDREN'S GARDEN FOR
SCALE COMPARISON

RECOMMENDED LIBRARY TERRACE SCHEME



DRAFT REVISED SITE PLAN

SEDUM

- + quick to establish, could be planted as sod
- + evergreen varieties
- + variety of leaf and flower colors
- + very drought tolerant
- + requires only 3-4" of soil
- + little maintenance, weeding during establishment
- only nonnative varieties suitable for sunny greenroof
- lack of biodiversity
- blooms only in summer



GREENROOF



Rapid Operations and Maintenance Center

Grand Rapids, Michigan

Installed 2011, Liveroof Standard Tray System (4" soil profile), Sedum mix

SEDUM GREENROOF PRECEDENTS



Bridgepoint Health

Toronto, Ontario

Installed 2012, Liveroof Standard Tray System (4" soil profile), Sedum mix

SEDUM GREENROOF PRECEDENTS

BELMONT LIBRARY Belmont, MA
Schematic Design • 03 28 2023

STIMSON



April



June



September



November

SEDUM GREENROOF PRECEDENTS

SEEDED MEADOW

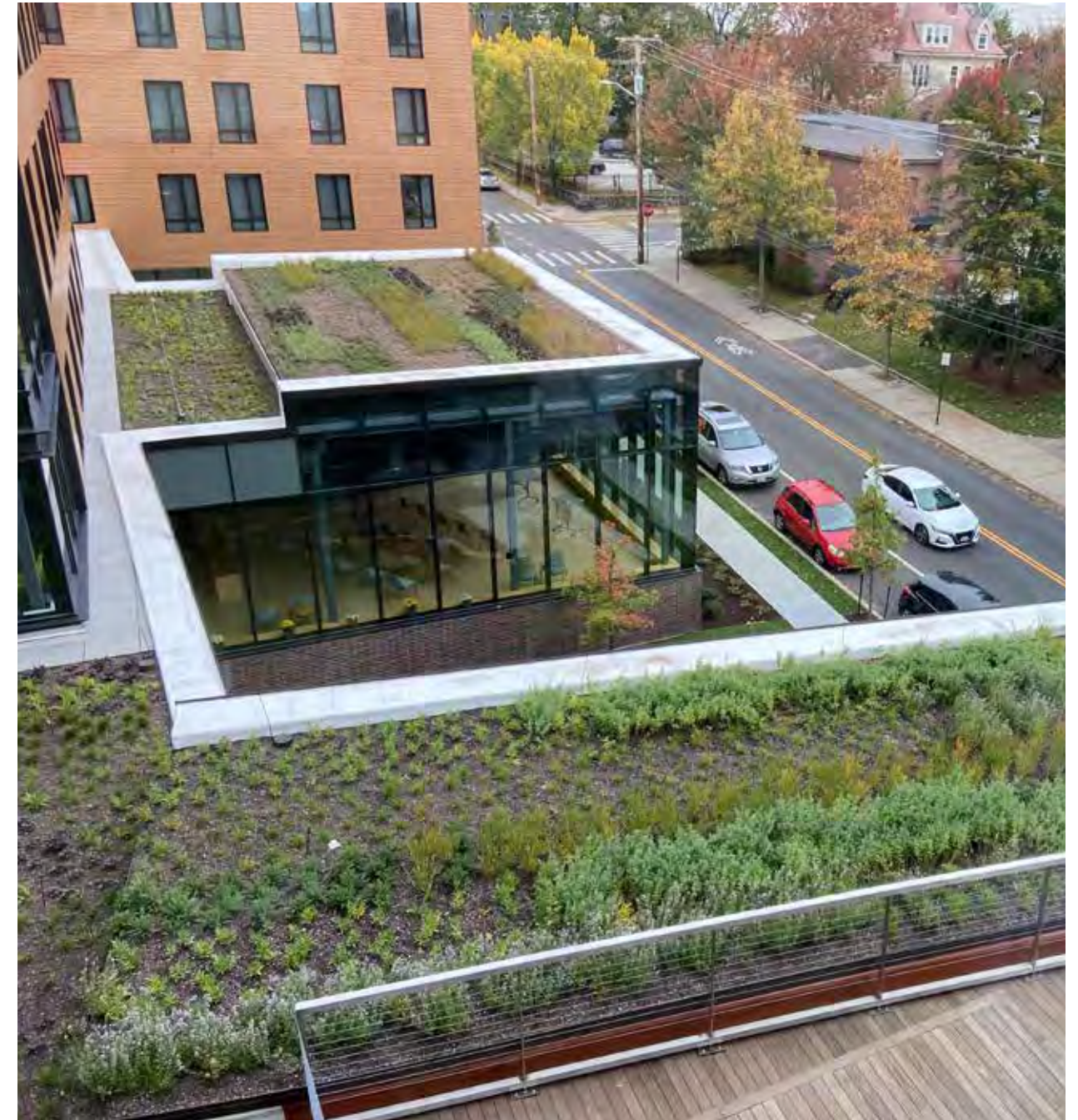
- +potential for greater biodiversity
- + longer flower display
- + variety of textures and colors
- + quick cover when pre-grown in trays
- requires 6"-8" soil depth



Brown University Health and Wellness Center

Providence, Rhode Island

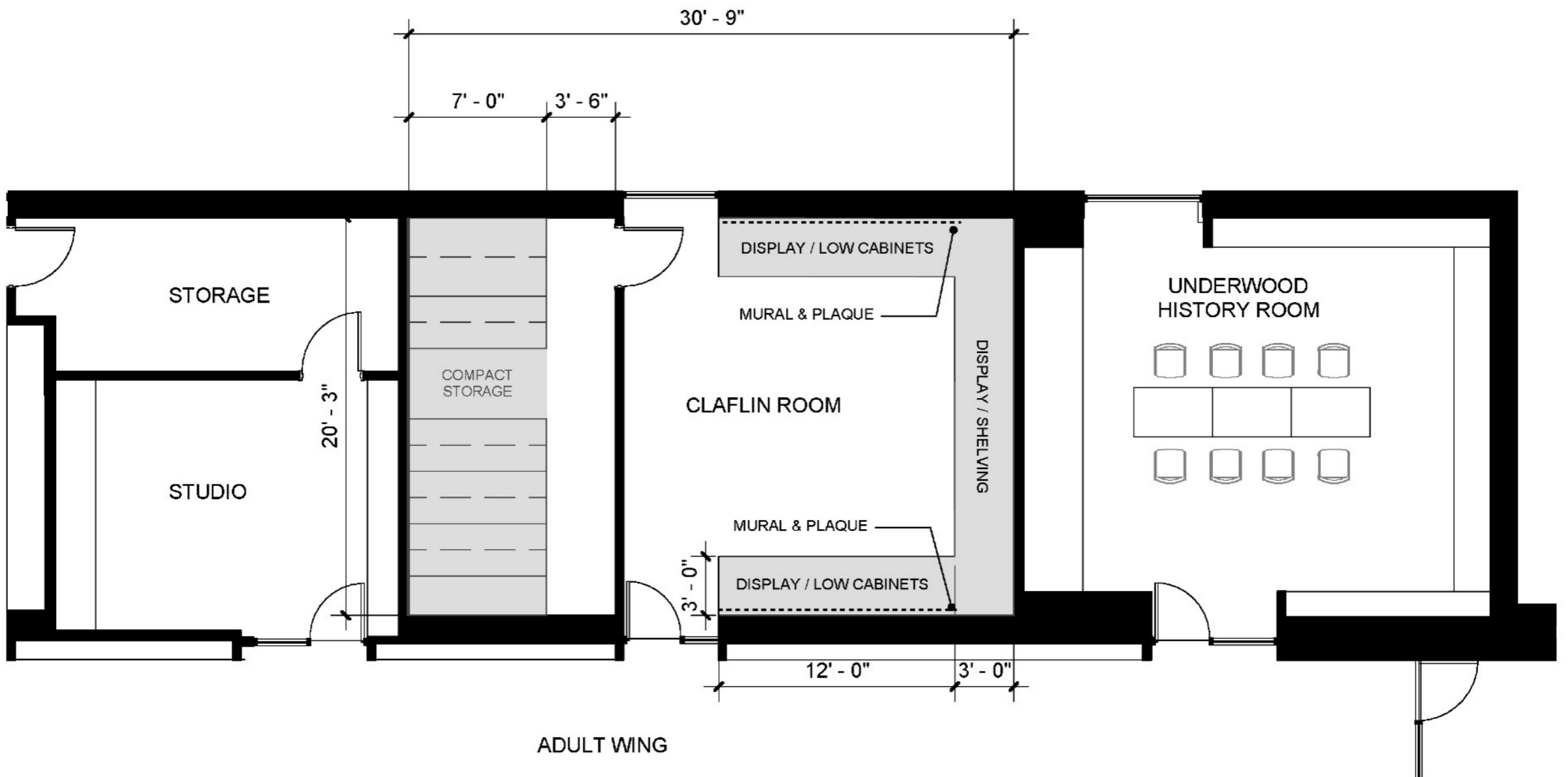
Shortly after installation, Liveroof Standard Tray System (6" soil profile), Mixed Perennials



PERENNIAL DRIFTS GREENROOF PRECEDENTS

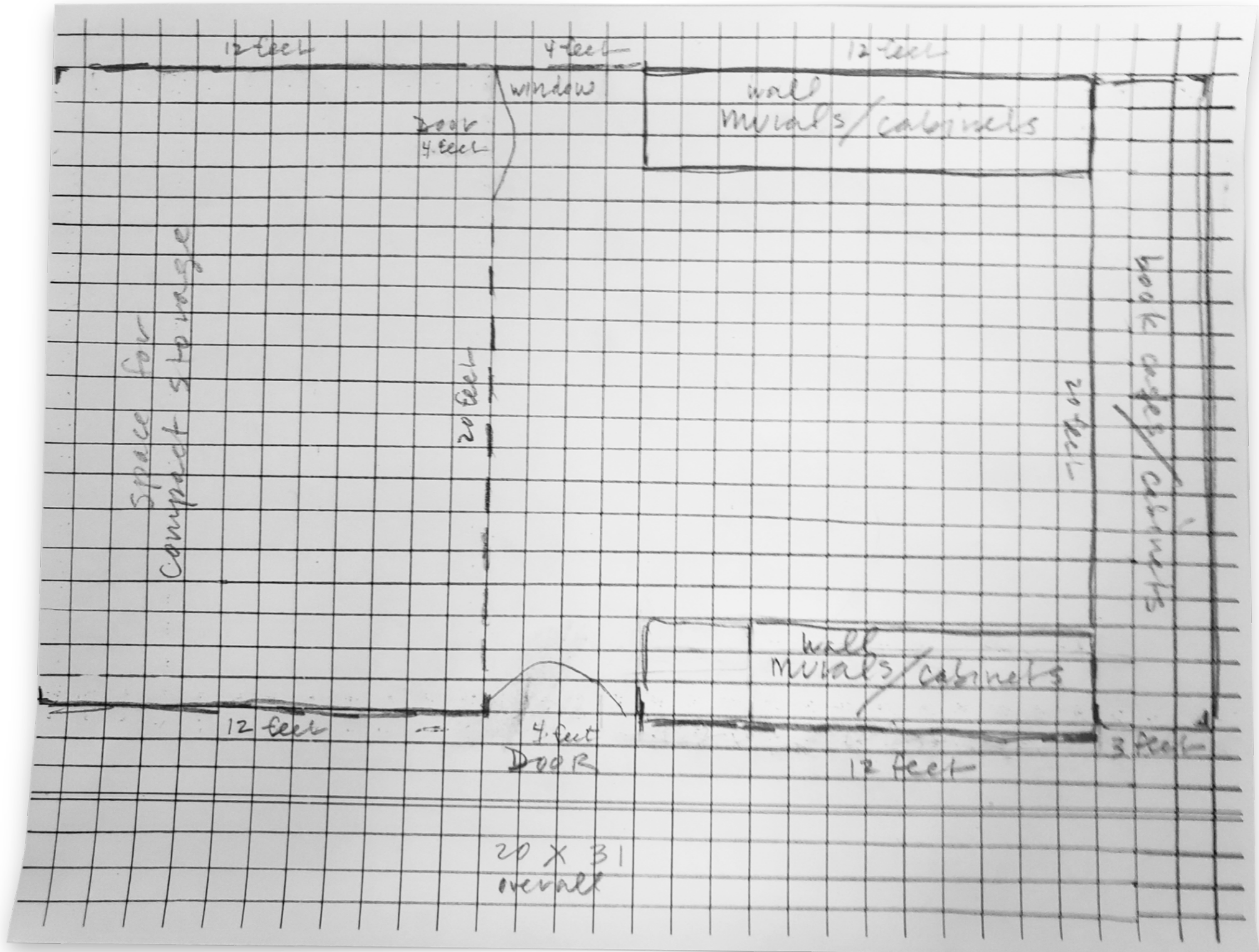
BELMONT LIBRARY Belmont, MA
Schematic Design • 03 28 2023

STIMSON



ADULT WING

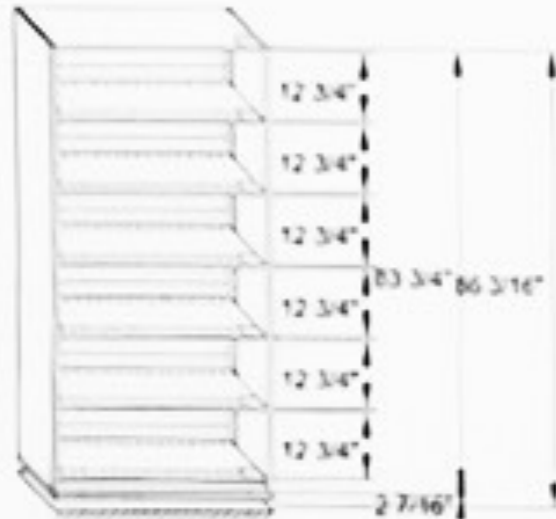
Claflin Room Revised Layout (623sf)



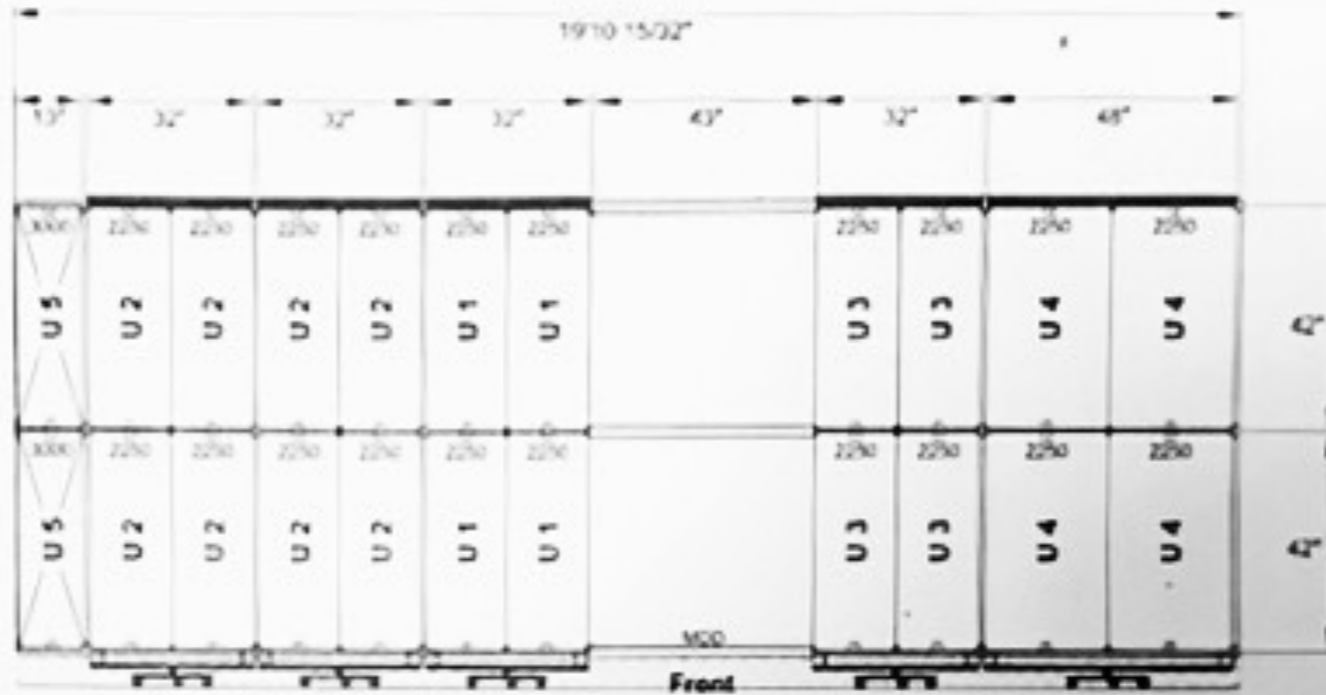
Clafin Room Historical Society Sketch

4 ft 2 in

H87 1/8"
83 3/4" x 42" x 18"



U2

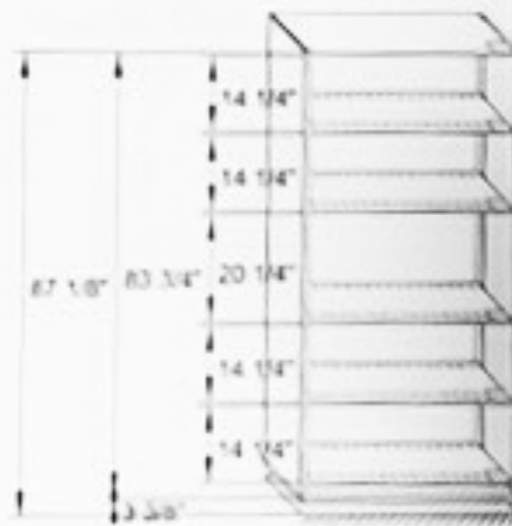


H87 1/8"
83 3/4" x 42" x 18"



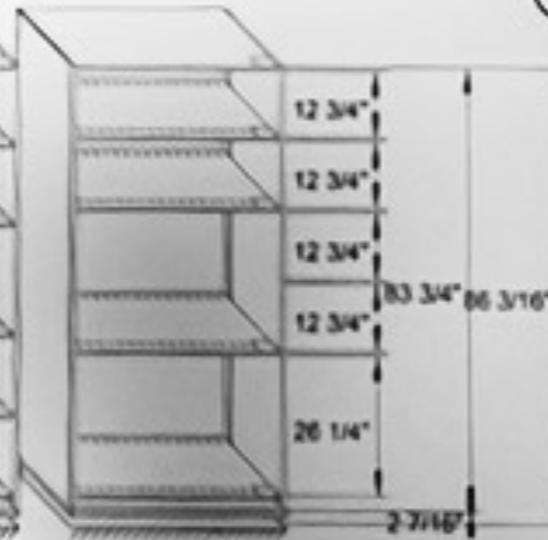
U1

H87 1/8"
83 3/4" x 42" x 18"



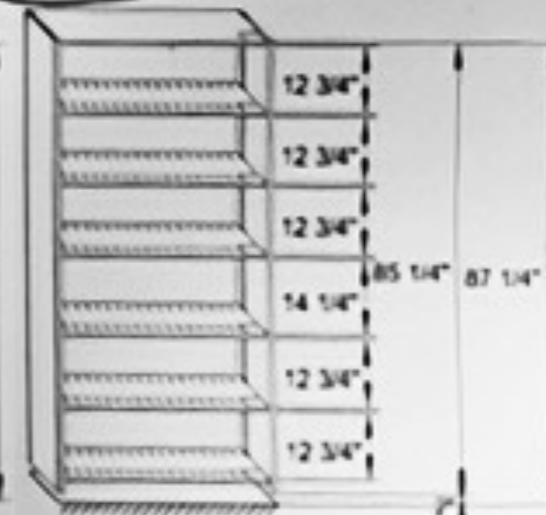
U3

H87 1/8"
83 3/4" x 42" x 20"



U4

H87 1/4"
85 1/4" x 42" x 18"



U5



Project Name: **Bellmont House - Prelim. Mobile Layout**
↳ Belmont Historical Society

Designer: *Donna D. ...* Scale: _____ Rev level: _____

Total Actual LFT
5280 LFT
 Drawn by: _____

APPROVAL
 This drawing Approved by: _____



Plaque

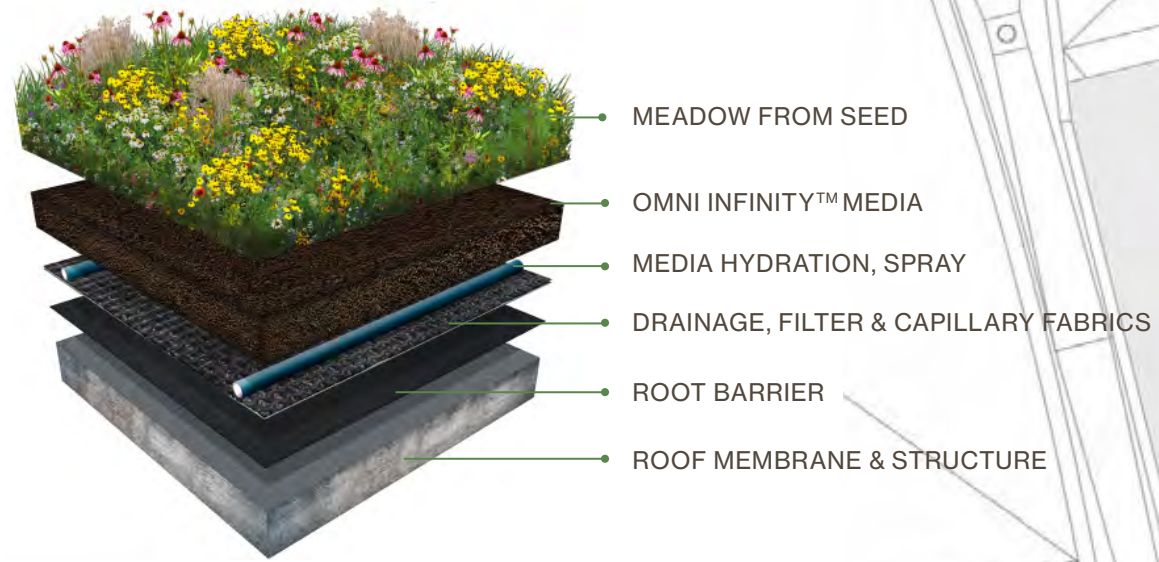
Mural

Display Cabinet

Claflin Room Existing Murals, Plaques and Display Cabinets

SEEDED MEADOW

- + potential for greater biodiversity
- + longer flower display
- + variety of textures and colors
- + adaptable over time to local conditions
- slower to establish



Hackley School

Tarrytown, New York

Concept, 3" Omni greenroof system, seeded, with some areas of sedum

SEEDED MEADOW GREENROOF PRECEDENTS

GRASSES+ SEDGES



Sideoats Grama

Bouteloua curtipendula
Purple flowers
Bloom in July-August
37" Height



Blue Grama

Bouteloua gracilis
Red, Green flowers
Bloom in August
18" Height



Junegrass

Koeleria macranth
Light Green flowers
Bloom in June-July
24" Height



Prairie Dropseed

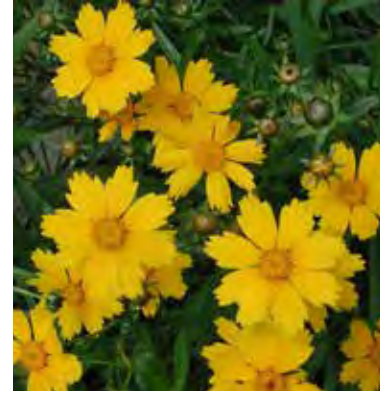
Sporobolus heterolepis
Green, Purple flowers
Bloom in August-September
37" Height



Eastern Star Sedge

Carex radiata
Light Green flowers
Bloom in June-July
10" Height

PERENNIALS



Lance Leaved Coreopsis

Coreopsis lanceolata
Golden Yellow flowers
Bloom in June-July
10" Height



White Prairie Clover

Dalea candida
White flowers
Bloom in July-August
34" Height



Purple Prairie Clover

Dalea purpurea
Purple flowers
Bloom in July-August
28" Height



Wild Strawberry

Fragaria virginiana
White flowers
Bloom in May-June
5" Height



Prairie Smoke

Geum triflorum
Pink-Red flowers
Bloom in May-June
11" Height



Spotted Bee Balm

Monarda punctata
Light Yellow flowers
Bloom in July-August
10" Height



Foxglove Beardtongue

Penstemon digitalis
White flowers
Bloom in June-July
18" Height



Hairy Beardtongue

Penstemon hirsutus
Light Purple flowers
Bloom in June-July
11" Height



Tall Cinquefoil

Potentilla arguta
White flowers
Bloom in July
34" Height



Prairie Petunia

Ruellia humilis
Lavender flowers
Bloom in July-August
6" Height



Skyblue Aster

Symphotrichum oolentangiense
Lavender-Blue flowers
Bloom in September-October
9" Height



Butterfly Weed

Asclepias tuberosa
Orange flowers
Bloom in June-August
37" Height



Eastern Red Columbine

Aquilegia canadensis
Red, Yellow flowers
Bloom in May-July
31-45" Height



Blue Sage

Salvia azurea
Blue flowers
Bloom in September-October
39" Height



Arrowleaf Violet

Viola sagittata
Purple flowers
Bloom in April-June
6" Height



Oudens Ello Architecture